

INTERNATIONAL TABLE BOXES

CT6-EU & RT6-EU Models



Metal Products Group



CT6-EU



RT6-EU



This symbol indicates the device is **RETRACTOR Ready** and accepts the number of retractors shown in the circle.

DESCRIPTION

We offer a wide variety of table boxes that are unique and upscale, meeting the aesthetic demands of today's consultants, architects and clients. Black and Brushed Anodized Aluminum finishes, a variety of sizes, shapes, and accessories are available for international use.

The CT6-EU Collection of table boxes provide a powerful and affordable solution for any installation. The versatile connector cavities are 100% configurable with universal outlets and allow for both high and low voltage. The mounting is always a 6" diameter round hole for the CT6-EU boxes. The CT6-EU Collection is available in a black or silver matte finish.

The RT6-EU Collection of table boxes provide the ultimate connectivity and functionality. Designed with hideaway doors for ease of access to the insert brackets and cable retractors makes connectivity effortless. RT6-S3 model can hold up to 1 T6-EU-LB-UNV2 or T6-EULB-SCHUKO bracket + 1 large T6 bracket + 1 half large bracket. On our RT6-S4 model it can hold up to 2 T6-EU-LB-UNV2 or T6-EULB-SCHUKO brackets + 1 large T6 bracket or 1 T6-EU-LB-UNV2 or T6-EULB-SCHUKO bracket + 2 large T6 bracket + 1 Half large bracket.

The various internal brackets available are designed to contain universal AC outlets, USB Chargers, Cable Pulls, Cable Retractors, Snap-In Keystone Connectors, or IPS Solutions. Our T6 Table Box insert brackets and Cable Retractors are available for our CT6-EU and RT6-Euro Table Box Series.

FEATURES

- Round Covers available in Black or Aluminum
- Mounts in a wide variety of tables with thicknesses ranging from .75" to 2.25".
- Connector plates can be populated to match customer requirements
- Can be reconfigured at any time as requirements change
- Deep interior compartment accommodates longer/larger connector shells.
- Retractor Ready – can accommodate up to 4 of FSR's TBRT Cable Retractors

FSR Inc.

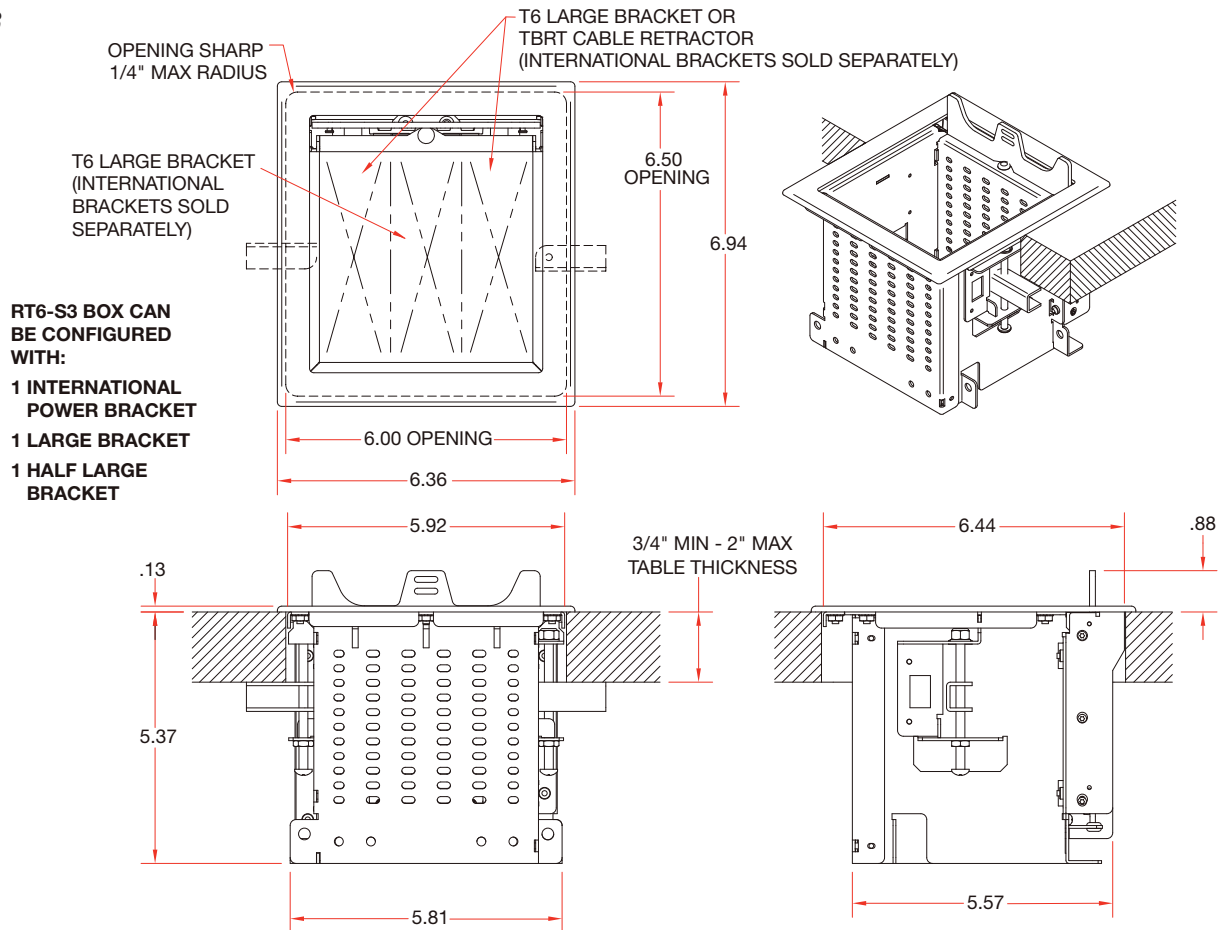
244 Bergen Boulevard, Woodland Park, NJ 07424
Phone: 973.998.2300 · Fax: 973.785.4207
Web: www.fsrinc.com · E-mail: sales@fsrinc.com
Toll Free: 1-800-332-FSR1

LIT1827A

RT6-EU DRAWINGS

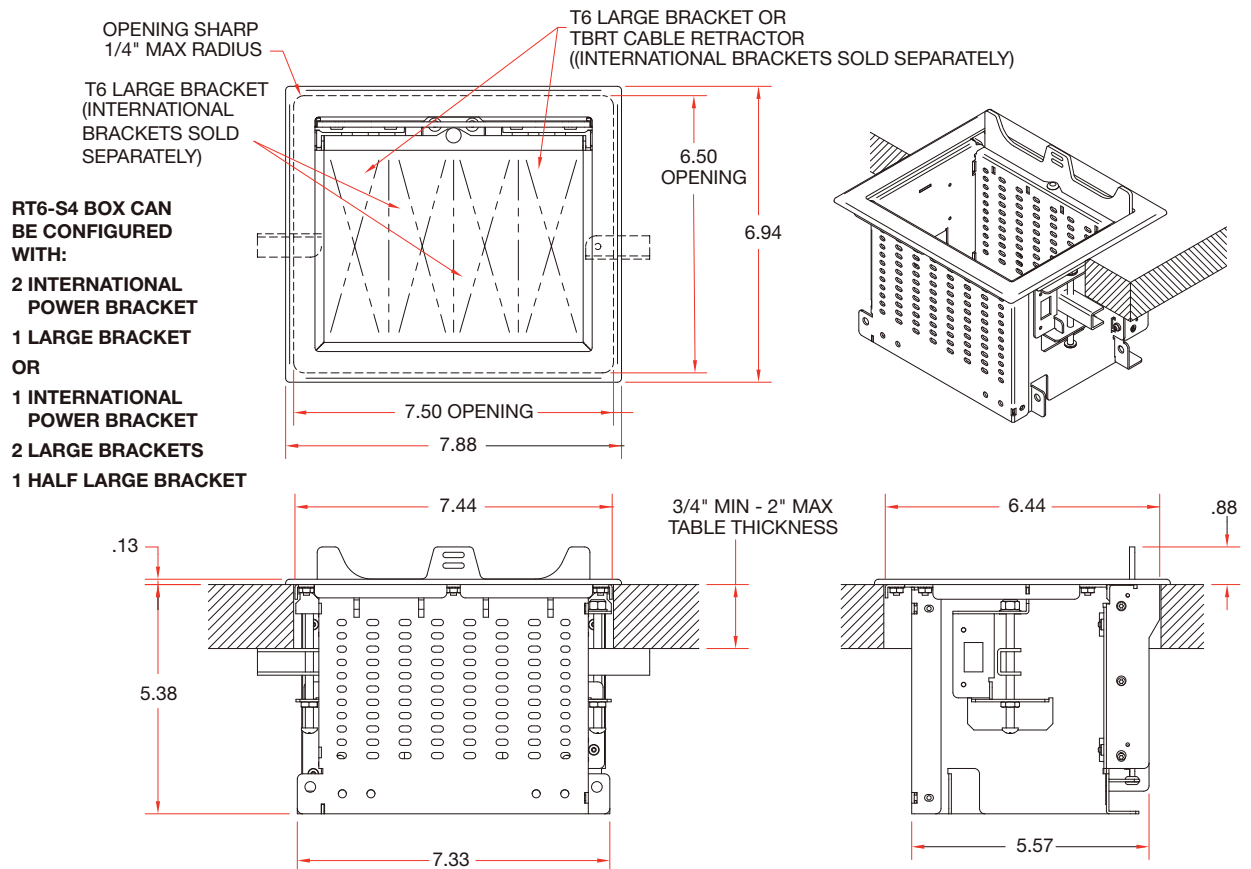
RT6-S3

8



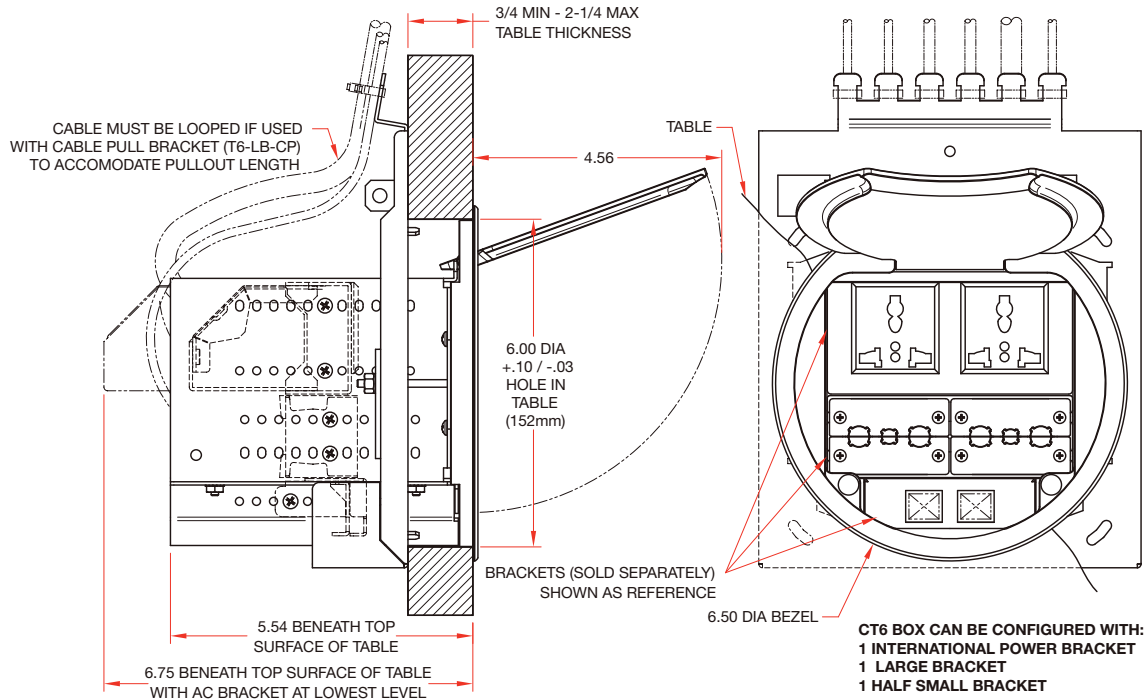
RT6-S4

8

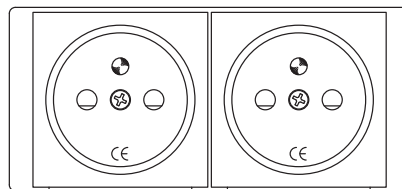


CT6-EU DRAWINGS

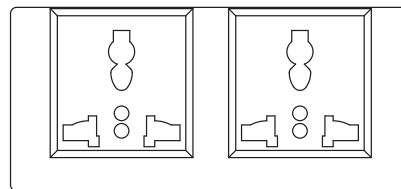
4



INTERNATIONAL POWER BRACKETS FOR CT6 & RT6 BOX



T6-EULB-SCHUKO



T6-EULB-UNV2

HALF LARGE BRACKETS USED FOR RT6

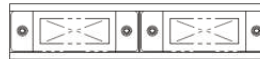
HALF LARGE SECTION BRACKET



RT-6-HLB-4MOM
4 Momentary Push Buttons
with LED Feedback



T6-HLB-CP
4 Cable Pass Through
Openings with Hole Plugs



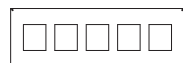
T6-HLB-2IPS
Mounts 2 IPS Inserts



T6-HLB-4SS
4 SS Keystone Openings
with Blanks

LARGE BRACKETS USED FOR CT6 AND RT6

LARGE SECTION BRACKET



T6-LB-5SS
Space for up to 5 FSR
Simple Solutions connectors

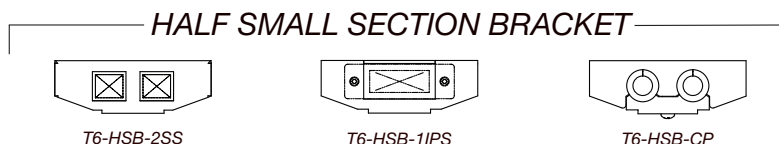


T6-LB-RTMKT
RT6-R-LB-RTMKT
Mounting kit for using up to four
FSR TBRT retractors in T6 style boxes



T6-LB-UN
Allows mounting of 4 IPS inserts
or six cables. Can also be used to
block off a section.

SMALL HALF BRACKETS FOR USE WITH CT6 ONLY



ORDERING INFORMATION

CT6 EURO Table Box Options		
18261	CT6-EUBLK	6" Round Table Box
18262	CT6-EUALM	6" Round Table Box
RT6 EURO Table Box Options		
18134	RT6-S3-ABK	3 Section Table Box with 1 Universal Bracket - Brushed Anodized Black
18138	RT6-S3-ALM	3 Section Table Box with 1 Universal Bracket - Brushed Anodized Aluminum
18135	RT6-S4-ABK	4 Section Table Box with 1 Universal Bracket - Brushed Anodized Black
18139	RT6-S4-ALM	4 Section Table Box with 1 Universal Bracket - Brushed Anodized Aluminum
International Power Brackets *Sold Separately		
17743	T6-EULB-SCHUKO	2 Schuko AC Receptacle
17538	T6-EULB-UNV2	2 Universal AC Outlets
Large Brackets for use with both CT6 Euro and RT6 Euro Boxes		
17070	T6-LB-5SS	T6 5 Snap-In Connector Opening Large Bracket
17914	T6-LB-UN	T6 Universal Bracket which can accommodate IPS, Blank, or Cable Pull
17639	T6-LB-RTMKT	CT6 Large Bracket Retractor Mount
17951	RT6-R-LB-RTMKT	RT6-R Retractor Mount Bracket
Half Large Brackets for use with RT6 EURO only		
17339	T6-HLB-CP	1/2 Bracket Cable Pull Housing, 4 Cables
17340	T6-HLB-2IPS	1/2 Bracket 2 Columns - 1 High IPS Opening
17444	T6-HLB-4SS	1/2 Bracket 4 Snap-In Opening
17918	RT6-HLB-4MOM	1/2 Bracket - 4 Monetary Switches
Half Small Brackets for use with CT6 EURO only		
17710	T6-HSB-2SS	CT6 Small Bracket, 2 Snap-in opening
17727	T6-HSB-1IPS	CT6 Small Bracket to hold 1 IPS insert
17728	T6-HSB-CP	CT6 Small Bracket for Cable Pull



244 Bergen Boulevard, Woodland Park, NJ 07424
 Phone: 973.998.2300 · Fax: 973.785.4207
 Web: www.fsrinc.com · E-mail: sales@fsrinc.com



Specifications are subject to change without notice.