

PWB-270/273

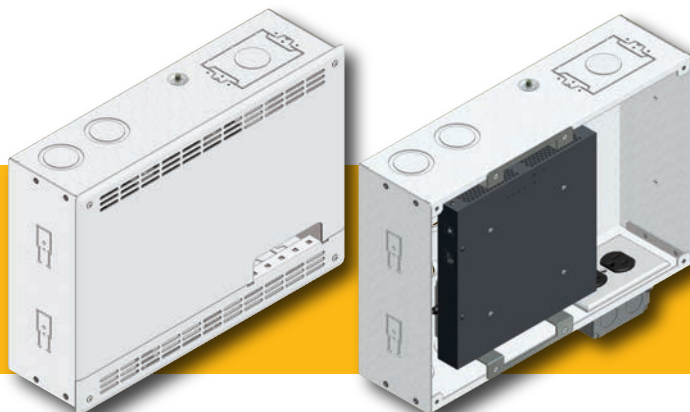
Project Wall Box for Crestron Devices



FSR wall box products meet the
Build America Buy America Act
(BABAA) and TAA requirements



Metal Products Group



Intertek

CONFORMS TO UL STD 80950-1
CERTIFIED TO CSA STD C22.2 NO. 60950-1

DESCRIPTION

The PWB-270 housing is specifically designed to quickly and easily house a variety of Crestron model DM-RMC series devices behind a wall mounted display or a projector. The devices are mounted to a removable universal bracket which is in turn mounted to the PWB-270 back box. It is also available as a PWB-273 3" deep unit.

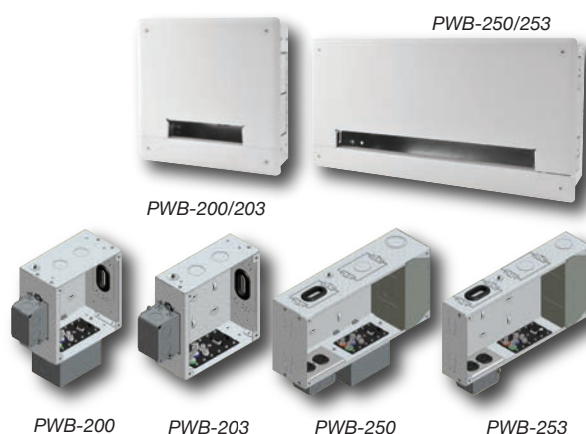
The back box is typically installed flush with the wall's surface, between either wood or steel studs. The appropriate mounting screws are included. A duplex box is also included for convenience and can be mounted at either the top or bottom duplex knockout areas on the back box. There are two 1" and 1.25" concentric knockouts on the top and bottom for cable/conduit entry and cable tie slots for cable management. Cable ties are included.

There is a two part vented cover, available in black or white, that provides convection cooling for the internal components. A slot on the cover facilitates passing cables through for external devices such as projectors and is designed to strain relief the cables as they exit.

FEATURES

- Rugged 16 gauge steel back box
- Black or white 1/16" painted two part cover
- Simple installation
- Hardware included
- Connections and cables are hidden behind cover for a neat install
- Multiple knockouts in a variety of sizes

OTHER PWB SERIES MODELS



PWB-270 Series - Standard Wall Thickness

17415	PWB-270-CRST-DM-WHT	PWB-270 Wall Box For Crestron DM Scaler - White
17416	PWB-270-CRST-DM-BLK	PWB-270 Wall Box For Crestron DM Scaler - Black
17783	PWB-270-SLDWHT-C	PWB-270 Solid White Cover

See PWB-200 series spec sheet for more details and ordering info.

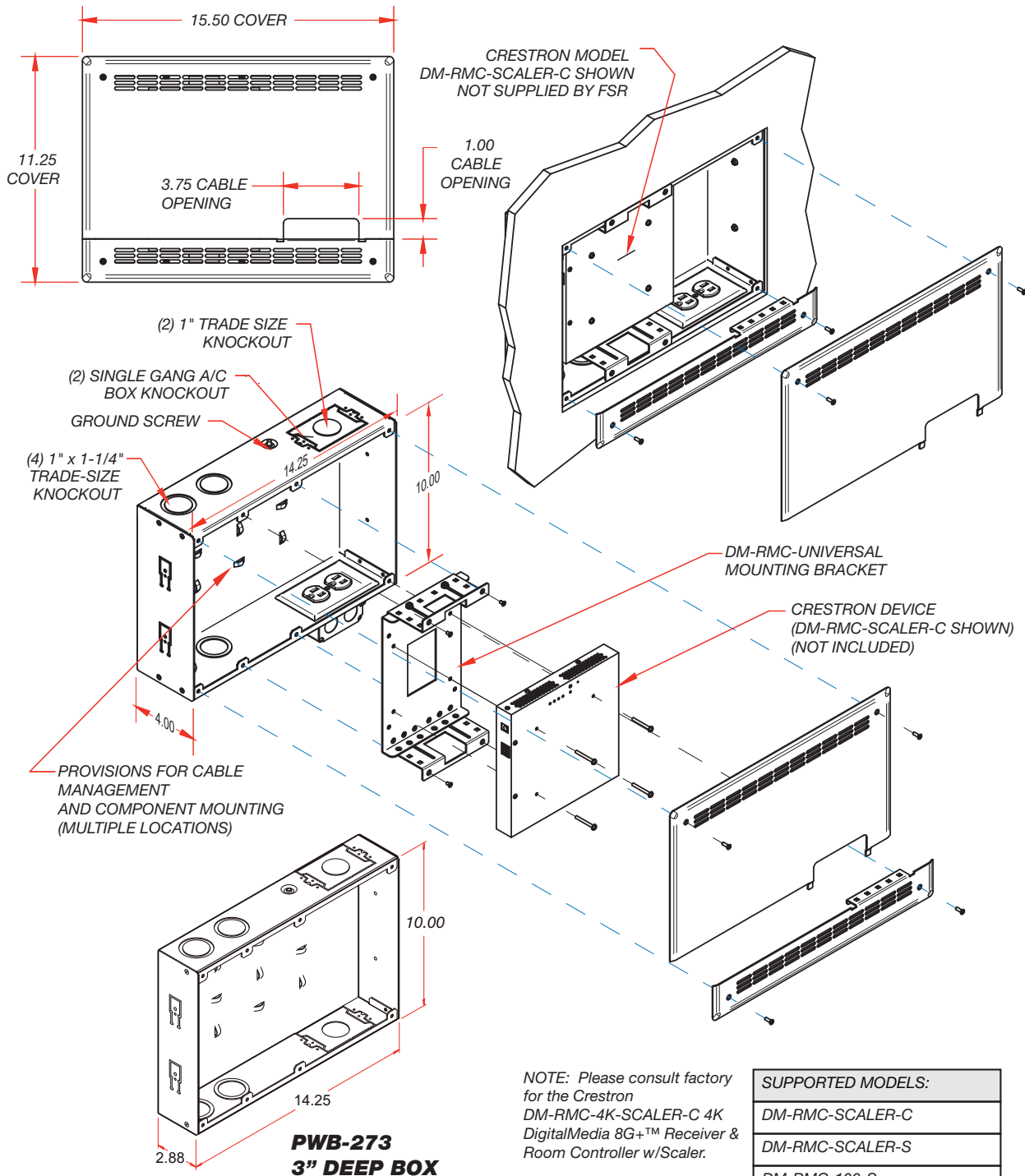
FSR Inc.

244 Bergen Boulevard, Woodland Park, NJ 07424
Phone: 973.998.2300 · Fax: 973.785.4207
Web: www.fsrinc.com · E-mail: sales@fsrinc.com
Toll Free: 1-800-332-FSR1

LIT1432E

PWB-270 DIMENSIONS

PWB-270



NOTES:

1. WALL BOX MATERIAL IS 16 GA GALVENIZED STEEL.
2. COVER MATERIAL .062-THK ALUMINUM, PAINTED.
3. STANDARD EQUIPMENT INCLUDED: MOUNTING HARDWARE FOR WOOD AND STEEL STUDS, JUNCTION BOX AND BRACKET FOR MOUNTING CRESTRON DM SCALER.



244 Bergen Boulevard, Woodland Park, NJ 07424
 Phone: 973.998.2300 · Fax: 973.785.4207
 Web: www.fsrinc.com · E-mail: sales@fsrinc.com



FSR wall box products meet the Build America Buy America Act (BABAA) and TAA requirements



Specifications are subject to change without notice.