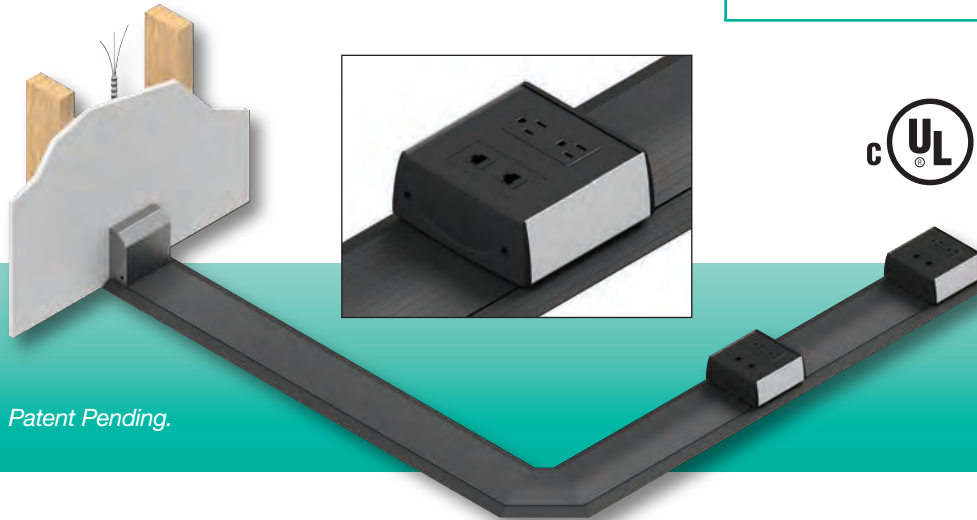


SMART-WAY RACEWAY SYSTEM

FSR

Power Products Group



Patent Pending.

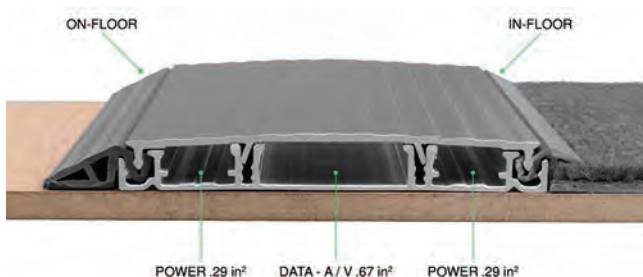
DESCRIPTION

The Smart-Way Raceway System is the intelligent choice for wire management. **It is now configurable for either on top of (vinyl, carpet, wood) or in any flooring (carpet, wood, tile, laminate) with the provided edging.**

The Smart-Way Raceway gets cables where they're needed. The Raceway is intended for offices, conference rooms, collaborative work environments, classrooms or anywhere wire management is desired. The Raceway compartments provide ample space for power, communications and A/V connectivity with the capacity to hold (14) 12 AWG (.130" diameter) power conductors, and (9) CAT 5E (.215" diameter), or (5) CAT 6A (.250" diameter) data cables.

The Smart-Way is only 0.6" high, ADA compliant, available in slate gray or aluminum finishes and is sold in 6' sections. Its design includes centering V-grooves in the track to locate pilot/clearance holes for securing fasteners. Optional Elbow Kits are available to make 45 or 90-degree angles that will not compromise the minimum bend radius of the cables.

It's the most cost-effective and easiest way to get your power, data and AV across the room to where you really need it.



FEATURES

- One Raceway, Dual Purpose
- Installs on top of or in any flooring for a quick installation
- Ultra-low profile
- ADA compliant
- Competitive pricing
- Raceway compartments provide ample space for power, Communications, and A/V requirements
- The Smart-Way System has several device box options to choose from when deciding on your connectivity needs
- Sold in 1', 3', 6' sections or in a 1'2'3' saw-less installation kit
- Available in slate gray or aluminum finishes
- Optional elbow kits for making 45 or 90-degree angle turns which will not compromise the minimal bend radius of wire
- Perfect for offices, conference rooms, collaborative work environments, classroom and anywhere wire management is needed with access to power and data

FSR Inc.

244 Bergen Boulevard, Woodland Park, NJ 07424

Phone: 973.785.4347 · Fax: 973.785.4207

Web: www.fsrinc.com · E-mail: sales@fsrinc.com

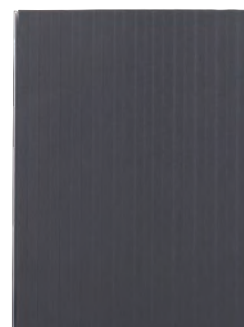
LIT1749C

Smart-Way Raceway Lengths

18203	SW-T72-ALM	72" Raceway Aluminum
18204	SW-T72-SLT	72" Raceway Slate Gray
18297	SW-T36-ALM	36" Raceway Aluminum
18298	SW-T36-SLT	36" Raceway Slate Gray
18299	SW-T12-ALM	12" Raceway Aluminum
18300	SW-T12-SLT	12" Raceway Slate Gray
18301	SW-T123-ALM	1', 2', 3' Saw-less Installation Kit
18302	SW-T123-SLT	1', 2', 3' Saw-less Installation Kit



Aluminum



Slate

Each 6' section includes a base and cover, two couplers, moveable wire guides, raceway base edges, and a hex tool for installation. Additional Raceway lengths are available in 3-foot, 1-foot and a three part (1', 2', 3') saw-less installation kit.

Smart-Way Installation Accessories

18206	SW-END-SLT	Raceway End Stop - Slate *Required at the end of the raceway, must order with system.
18307	SW-STRC-6	6 pack of extra couplers
18308	SW-CCEF-SLT	Center Channel End Feed (same as stick end)
18321	SS-BRSH-BLK	Brush Insert for Decora Opening
18277	SW-CVR-TOOL	Smart-Way Cover Removal Tool
18327	SW-TPE-NO	No Transition Flush Plastic Edging
18318	SW-DB-2GEXT	2-Gang Device box Extension (1") (Device Box Not Included)
18319	SW-DB-3GEXT	3-Gang Device box Extension (1") (Device Box Not Included)
18322	WM-CP-BCKMT	Cable Path from Smart-Way Device Box to Table

18206



18321



18277



18318



18322

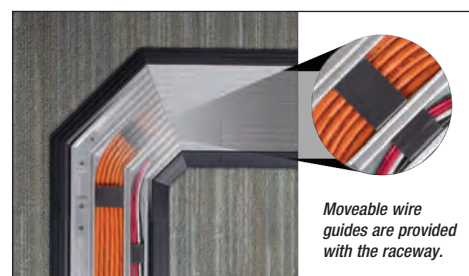


Smart-Way Corners and Fittings

One end stop is required at the end of the Raceway.

18207	SW-L90-ALM	90° Corner Aluminum
18208	SW-L90-SLT	90° Corner Aluminum
18303	SW-L45-ALM	45° Corner Aluminum
18304	SW-L45-SLT	45° Corner Slate Gray

The Smart-Way corners now come in either a 45° or 90° corner. Both corners are available in aluminum and slate gray. Corner transitions the cable seamlessly around the corner without compromising the minimal bend radius.



Moveable wire guides are provided with the raceway.

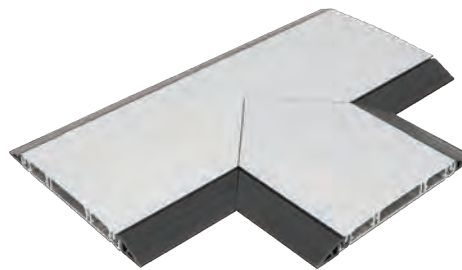
Visit www.fsrinc.com for detailed drawings and installation documents.

Smart-Way Fitting Tee

18305 SW-TEE-ALM 2 Part Tee

18306 SW-TEE-SLT 2 Part Tee

The two part tee allows cables to go in both directions to reach the required destination without any complications.



Smart-Way Device Boxes

18211 SW-DB-1P1D

2 gang device box with 1 power and 1 low voltage Decora opening, the divider is not removable.

SW-DB-1P1D



18212 SW-DB-2P

2 gang device box with 2 power Decora openings (NEMA spacing). Accesses the 2 outer channels only.

SW-DB-2P



18213 SW-DB-2D

2 gang device box with 2 low voltage Decora openings (NEMA spacing). Accesses the inner channel only.

SW-DB-2D



Visit www.fsrinc.com for detailed drawings and installation documents.

18214 SW-DB-2P1D

3 gang device box with 2 power and 1 low voltage Decora opening. The two power openings have NEMA spacing. The compartments access the appropriate track channels, can't be interchanged, and the divider is not removable.

SW-DB-2P1D



18215 SW-DB-1P2D

3 gang device box with 1 power and 2 low voltage Decora openings. The two low voltage openings have NEMA spacing. The compartments access the appropriate track channels, can't be interchanged, and the divider is not removable.

SW-DB-2P2D



Smart-Way Device Boxes (cont'd)

18216 SW-DB-1HWP1D

2 gang device box with 1 gang power - 1 1/2" & 3/4" KO - and 1 gang low voltage Decora opening.



SW-DB-1HWP1D

Smart-Way Wall Feed Boxes

18217 SW-WF-LP-ALM

18219 SW-WF-LP-SLT

Wall feed for 1 or 2 circuits of power and low voltage feed through.



SW-WF-LP-ALM



SW-WF-LP-SLT

18218 SW-WF-HP-ALM

18220 SW-WF-HP-SLT

18317 SW-WF-RIN Wall Feed Rough In Box (New Construction)

18320 SW-FCT-SLT Raceway to Flexible Metal Conduit Transition

18326 SW-PKF-SFIT4 Raceway Feed from 4" Poke Through (Poke-through not included)

Wall feed for 2 or more power circuits and low voltage feed through.



SW-WF-HP-ALM



SW-WF-HP-SLT

Visit www.fsrinc.com for detailed drawings and installation documents.

Smart-Way Wall Feed Kit

18221 SW-WF-RCWY-ALM

18222 SW-WF-RCWY-SLT

Kits contains:

- 1 Smart-Way Wall Feed Box
- 1 Hubbell 1G Low Profile Box (PW1LPB)
- 1 Hubbell 1G Box Cover (KP14)
- 1 Hubbell Flat Elbow (PW1FE)
- 2 Hubbell 30" Wall Trak (PW1BC)



SW-WF-RCWY-ALM



SW-WF-RCWY-SLT



Smart-Way Raceway with wall feed kit.



Smart-Way Raceway wall feed kit, closeup.



Smart-Way Raceway with wall feed kit,
power only.



Smart-Way Raceway with wall feed kit,
power and data.

INSTALLS ON TOP OF ANY FLOORING



Collaboration Spaces



Classrooms



Office Work Spaces



Training Centers



Conference Rooms



Specifications are subject to change without notice.

FSR Inc.

244 Bergen Boulevard, Woodland Park, NJ 07424
Phone: 973.785.4347 · Fax: 973.785.4207
Web: www.fsrinc.com · E-mail: sales@fsrinc.com