

T6 FLEX

Room Control at your fingertips

FSR

Control Products Group

T6 FLEX



DESCRIPTION

Encased in one of our elegant T6 table boxes the T6 Flex control system is a small, powerful and affordable solution perfect for nearly any installation. It features a 3.5" color LCD touchscreen and all of the connectivity needed to control the lighting, shades and every piece of AV equipment installed all from one central location.

It features the full complement of serial, IR, GPIO and Ethernet ports and is the right choice for larger installations or where network connectivity is required. The interior compartment can be populated with a variety of AC and AV connector plates available from FSR.

A Flex can also be remotely controlled using the Flex Remote Control software. The software connects to the Flex installed in the room and replicates the screen on the desktop and is available for: Windows 8®; Windows RT®; Windows Phone®; Android®; iPad® and iPhone®.

TARGET MARKETS

- K-12 Classrooms
- University Lecture Halls
- Boardrooms
- Meeting Rooms
- Conference Rooms

FEATURES

- 3.5" Diagonal Color LCD Touch Screen
- 4 Serial Ports
- 4 IR Ports (Each Can Control up to 4 Devices)
- 4 GPIO Ports
- IP Port
- Built In Clock / Calendar with Scheduler
- Multi Command Scripting Conditionality
- "Power over Ethernet capability"



FSR offers Complete Collaboration / Control Solutions available in many configurations. Contact our sales team to discuss your specific requirements.

FSR Inc.

244 Bergen Boulevard, Woodland Park, NJ 07424

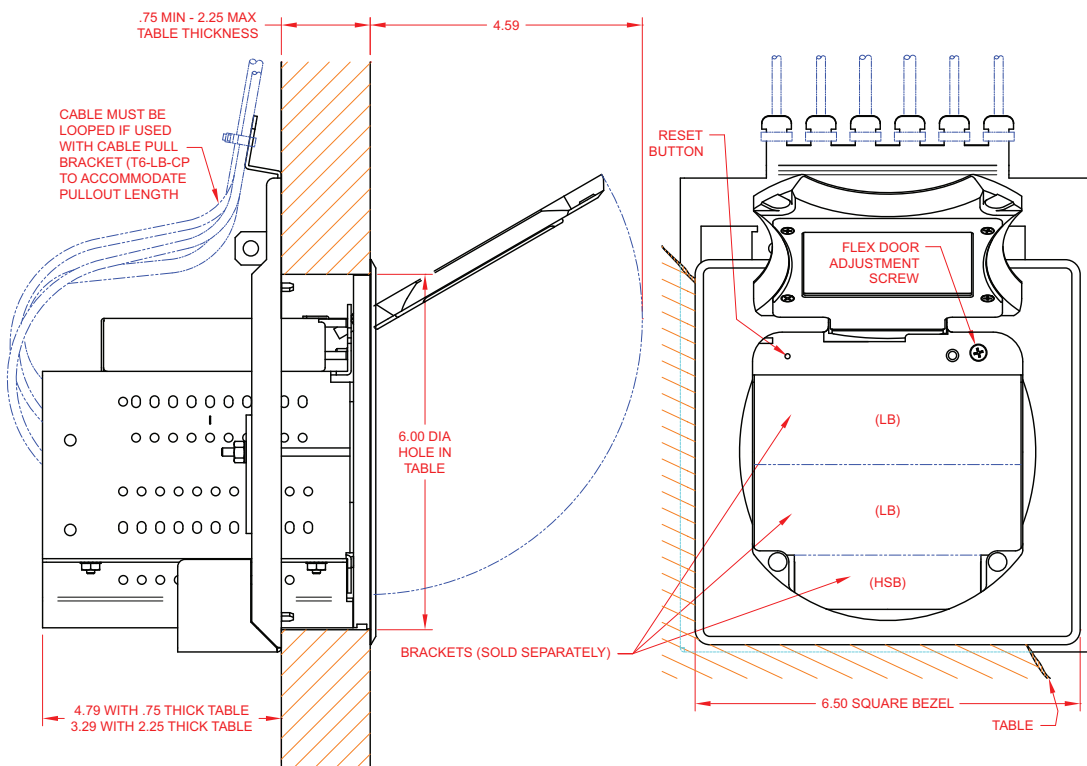
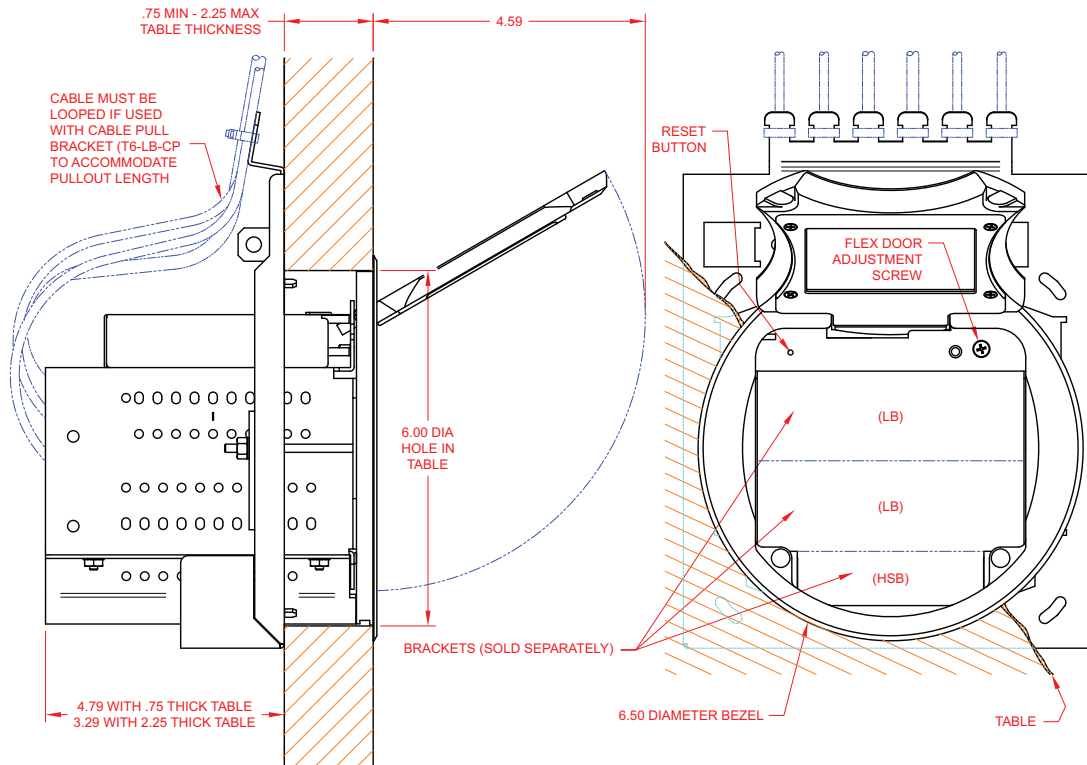
Phone: 973.785.4347 · Fax: 973.785.4207

Web: www.fsrinc.com · E-mail: sales@fsrinc.com

LIT1434D

DIMENSIONS

T6 FLEX



T6 FLEX ORDERING INFORMATION

T6-FLEX Requires 2 Large and 1 Half Small Bracket - Select Large & Half Small Brackets Below

Item #	Part #	Description
17737	T6-FLEX-BLK	6" Table Box with Flex Control Unit- Round - Black (Chassis Only)
17739	T6-FLEX-ALM	6" Table Box with Flex Control Unit- Round - Aluminum (Chassis Only)
17740	T6-FLEX-SQALM	6" Table Box with Flex Control Unit- Square - Aluminum (Chassis Only)
17741	T6-FLEX-BRS	6" Table Box with Flex Control Unit- Round - Brass (Chassis Only)
17742	T6-FLEX-SQBRS	6" Table Box with Flex Control Unit- Square - Brass (Chassis Only)
T6 Large Section Brackets - Choose TWO Edison = Standard 3 Prong Edison Plug Mains = Hard Wired Electric Feed		
17068	T6-LB-AC3HW	T6 Large Section Bracket w/ 3 AC Outlets - Mains
17070	T6-LB-5SS	T6 Large Section Bracket for 5 Snap In Connectors
17639	T6-LB-RTMKT	T6 Large Section Bracket for mounting of up to four TBRT Retractors (only one per T6)
17910	T6-LB-AC1CH	T6 Large Section Bracket w/1 AC Outlet and 4 Chargers
17956	T6-LB-AC1CH-W	T6 Large Section Bracket w/1 AC Outlet and 4 Chargers-white
17911	T6-LB-AC2CH	T6 Large Section Bracket w/2 AC Outlets and 2 Chargers
17957	T6-LB-AC2CH-W	T6 Large Section Bracket w/2 AC Outlets and 2 Chargers-white
17960	T6-LB-AC2U1	T6 Large Section Bracket w/2 AC outlets with 1 additional AC outlet in rear
17961	T6-LB-AC2U1-W	T6 Large Section Bracket w/2 AC outlets with 1 additional AC outlet in rear-white
17962	T6-LB-AC3RR	T6 Large Section Bracket w/3 outlets with center outlet rotated
17963	T6-LB-AC3RR-W	T6 Large Section Bracket w/3 outlets with center outlet rotated-white
17914	T6-LB-UN	T6 Large Section Bracket for mounting of 4 IPS inserts or 6 cables
T6 Half Small Brackets - Choose ONE		
17710	T6-HSB-2SS	T6-Flex EURO Half Small - Bracket for 2 Snap-In Jacks
17727	T6-HSB-1IPS	T6-Flex Half Small Bracket - Holds 1 IPS Insert
17728	T6-HSB-CP	T6-Flex Half Small Bracket - Cable Pull Bracket
Flex Accessories		
17093	FLEX-BATT	Battery Backup Kit
17095	FLEX-PRGM	Programming Kit for FLEX w/ IR Learner
17019	IR-EC1-6	Single IR Emitter w/ 6' Cable
17295	FLEX-MGR	Flex Management Software Suite

LARGE SECTION BRACKETS



T6-LB-AC3HW



T6-LB-5SS



T6-LB-RTMKT



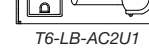
T6-LB-AC1CH



T6-LB-AC2CH



T6-LB-AC2U1



T6-LB-AC3RR



T6-LB-UN

SMALL SECTION BRACKETS



T6-HSB-1IPS



T6-HSB-2SS



T6-HSB-CP

SPECIFICATIONS

Serial Ports (RS-232)

Speed: 2400-115,200 bps (Ports 1,2,3)
2400-57,600 bps (Port 4)
Pins: TX, RX and GND
Connector type: Screw terminal

IR Ports

Connector type: Screw terminal

I/O Ports

Output: open collector, current limited to 100mA,
(24VDC max)
Input: $V_{IH_MIN} = 5VDC$, $V_{IH_MAX} = 24VDC$,
 $V_{IL_MAX} = 0.4VDC$
Connector type: Screw terminal

Ethernet Port

Type: 10/100BASE T/X
Compliance and supported features:
Compliant with IEEE 802.3/802.3u (100BASE-TX)
Compliant with ISO 802-3 / IEEE 802.3 (10BASE-T)
Supports Auto-negotiation
Supports Automatic polarity detection and correction
Supports HP Auto MDI/MDI-X
(no crossover cables required)
Protocols TCP/IP, UDP
Connector type: RJ-45

Power

Local adapter
Voltage: 12VDC
Current: 500mA
Power supply included
Connector type: Screw terminal

Power over Ethernet (PoE)

Compliant with IEEE 802.3af (Class I device)
Support local power adapter OR-ing for redundancy
(local adapter preference)
Unit can be powered from an 802.3af compliant PoE
switch (not provided)
Unit can be powered from an 802.3af compliant PoE PSE
adapter (i.e. midspan injector. Not included
(optional accessory)

See LIT1359
FLEX Brochure
for additional
application
information.



Check out our
Flex App
available at
the App Store



Specifications are subject
to change without notice.

FSR Inc.

244 Bergen Boulevard, Woodland Park, NJ 07424
Phone: 973.785.4347 · Fax: 973.785.4207
Web: www.fsrinc.com · E-mail: sales@fsrinc.com