

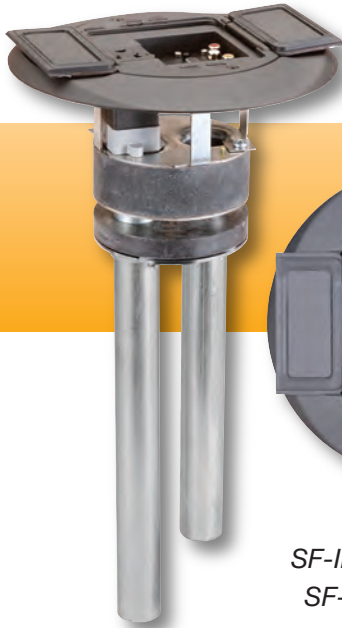
## SmartFit Floor Box



# FSR

## Metal Products Group

SmartFit System



SF-IPS-PK1 Kit with a  
SF-BLKC-CV Cover



SF-IPS-PB Kit with a SF-BLKT-CV Cover

### DESCRIPTION

FSR SmartFit is an innovative system that provides flexible AV solutions for both flush in-floor boxes and fire rated poke thrus.

The SmartFit system features a universal cover assembly and multiple sub-plates that install on both the pour-in-place floor boxes and the fire rated poke-thrus. With the SmartFit system, FSR delivers one consistent look for "in-the-floor" or "through-the-floor" installations with power and audio/video requirements.

There are three sub-plates available in the SmartFit line: A Dual Decora sub-plate, a three IPS insert sub-plate with included AC outlet and a Decora/Snap-in plate with included AC outlet. This sub-plate accommodates 15 or 20A standard or isolated-ground receptacles and FSR's SF-labeled Decora interfaces, or SS Decora inserts. By using 2 SS 6-port inserts, a maximum of 12 data jacks can be accommodated.

The 3 IPS sub-plate lets you install up to 3 FSR IPS plates along with 20 amps of AC power. IPS insert plates provide pass-through connectivity for audio, video, phone, data, power, and control connectors. The AC power is provided pre-wired with each plate. The Decora / Snap-in sub-plate handles any FSR / Decora interfaces and has two snap-in openings to easily install the connectors of your choice.

### FIRE RATED POKE THROUGH

- "Step down" installation clips allow the fitting to be removed from the floor from above.
- Stationary fire barrier expands during fire conditions to provide upper fire seal.
- Adjustable fire barrier accommodates concrete floor thickness from 2¼" to 7".
- Features dual 1" E.M.T. or 1½" and ¾" conduit tubes for increased cable capacity.
- Accepts FSR SmartFit cover for both carpet and tile applications.
- UL Listed for use in 1-4 hour rated floors.
- Easy installation, simply drill a 4" hole and install

### PVC CONCRETE FLOOR POUR BOX

- Cover mounts directly to included mounting clips (no adjustment ring is necessary).
- Oversized 1" and 1½" conduit hub provides increased cable capacity and helps maintain proper bend radii.
- Saves time and money on installation with a simple saw cut for an after-pour adjustment.
- PVC floor box and universal cover combination exceeds UL514A scrub water requirements.
- For use in concrete pours from 3" to 6". Supplied with concrete cap, conduit reducers, and conduit hub plugs.

## FSR

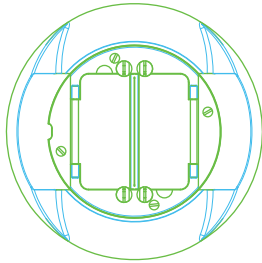
244 Bergen Boulevard, Woodland Park, NJ 07424

Phone: 973.998.2300 · Fax: 973.785.4207

Web: [www.fsrinc.com](http://www.fsrinc.com) · E-mail: [sales@fsrinc.com](mailto:sales@fsrinc.com) LIT1174F

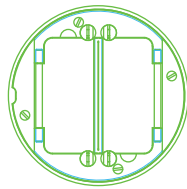
## COVERS

FOR CARPET APPLICATIONS



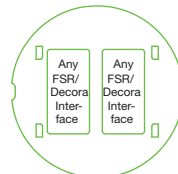
**SF-BC-CV**  
**SF-BLKC-CV**  
**SF-SC-CV**

FOR TILE APPLICATIONS

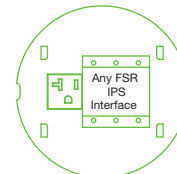


**SF-BT-CV**  
**SF-BLKT-CV**  
**SF-ST-CV**

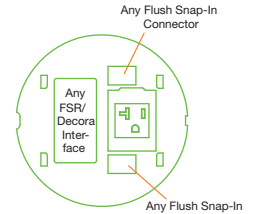
## SUB-PLATES ONLY



**SF-DDP**

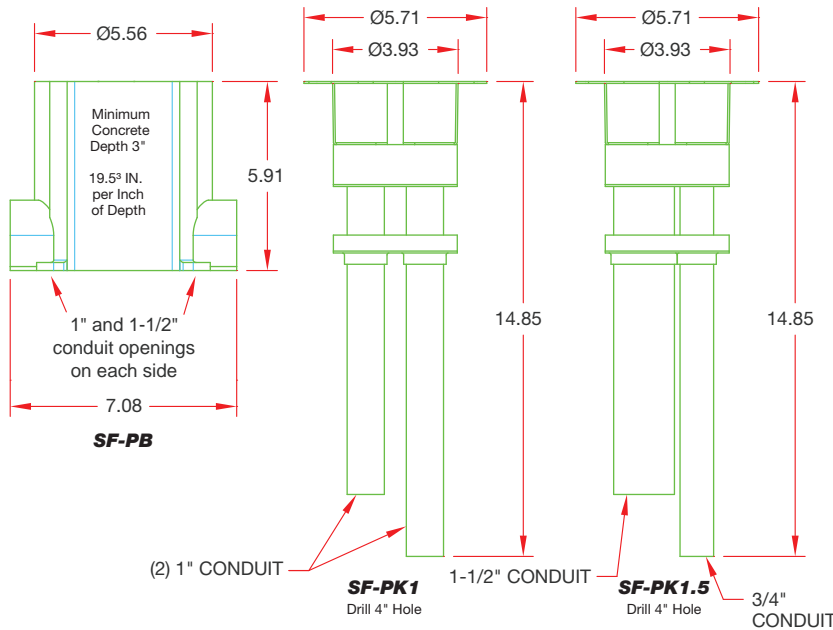


**SF-IPSP**  
AC Receptacle Provided By  
FSR



**SF-2SDP**  
AC Receptacle Provided By  
FSR

## BOXES / FITTINGS

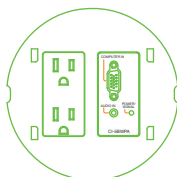


## SmartFit IPS Specialty Inserts

- 16721 IPS-SF940T Triple Ht. HD-15 to 5 BNC, 3.5mm Mini Stereo, 2 CAT-5
- 16725 IPS-SF941T Trpl Ht. HD-15 to 5 BNC, Mini Stereo, 1 CAT 5, 1 RCA (Y)
- 16729 IPS-SF942T Trpl Ht HD-15 to 5 BNC, Mini Stereo, 1 CAT 5, 1S

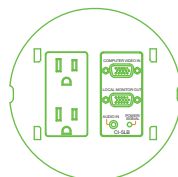
## KITS

INCLUDES BOX / FITTING, SUB-PLATE, AC RECEPTACLE AND ELECTRIC INTERFACE (UNLESS OTHERWISE NOTED). ORDER COVERS SEPARATELY.



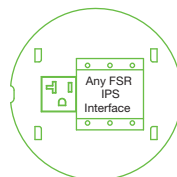
**SF-CI5-PB**  
**SF-CI5-PK1**

AC Receptacle  
Provided By  
Others



**SF-CI5LB-PB**  
**SF-CI5LB-PK1**  
**SF-CI5LB-PK1.5**

AC Receptacle  
Provided By  
Others



**SF-IPS-PB**  
**SF-IPS-PK1**  
**SF-IPS-PK1.5**

IPS Plates sold separately  
AC Receptacle Provided By FSR



Specifications are subject  
to change without notice.



244 Bergen Boulevard, Woodland Park, NJ 07424  
Phone: 973.998.2300 · Fax: 973.785.4207

Web: [www.fsrinc.com](http://www.fsrinc.com) · E-mail: [sales@fsrinc.com](mailto:sales@fsrinc.com)

LIT1174F