



Advanced Flex Control Builder Guide: Synchronizing Flex Panels (Sync Mode)

Overview

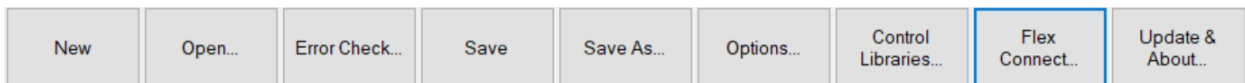
Sync Mode allows for any number of Flex devices to work in unison through an ethernet connection. This can be useful when trying to control multi-room systems running a Flex device in each room just as an example. This document will explain how to synchronize multiple Flex panels with one Flex device labeled the Master.

Load the Project into Each Flex Panel

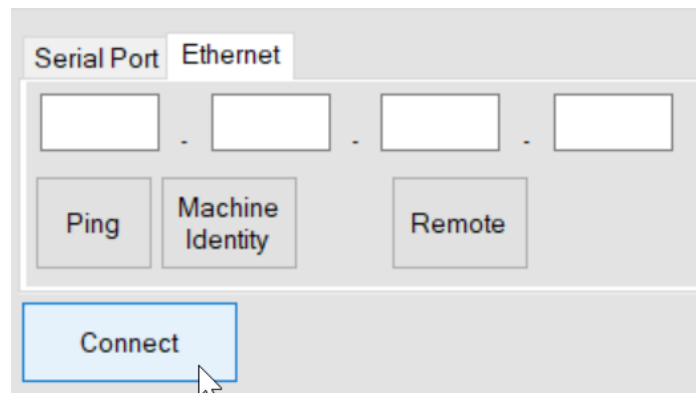
****Note-** All Flex Panels to be synchronized must have the same Project loaded prior to enabling sync. Minor differences graphics such as backgrounds, and button colors can be supported. However, the number of screens and button actions must match so as not to get the Flex panels out of synchronization during operation.

****Note-** All Flex Panels to be synchronized in the same network must have the same version of the firmware.

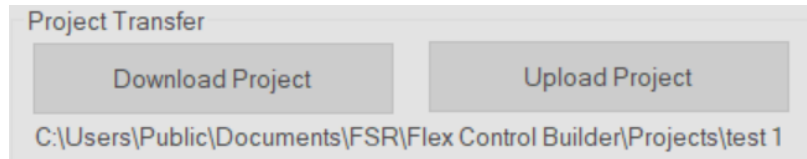
To load a project into a Flex panel click on the “Flex Connect” button located on the tool bar at the top of the Project screen.



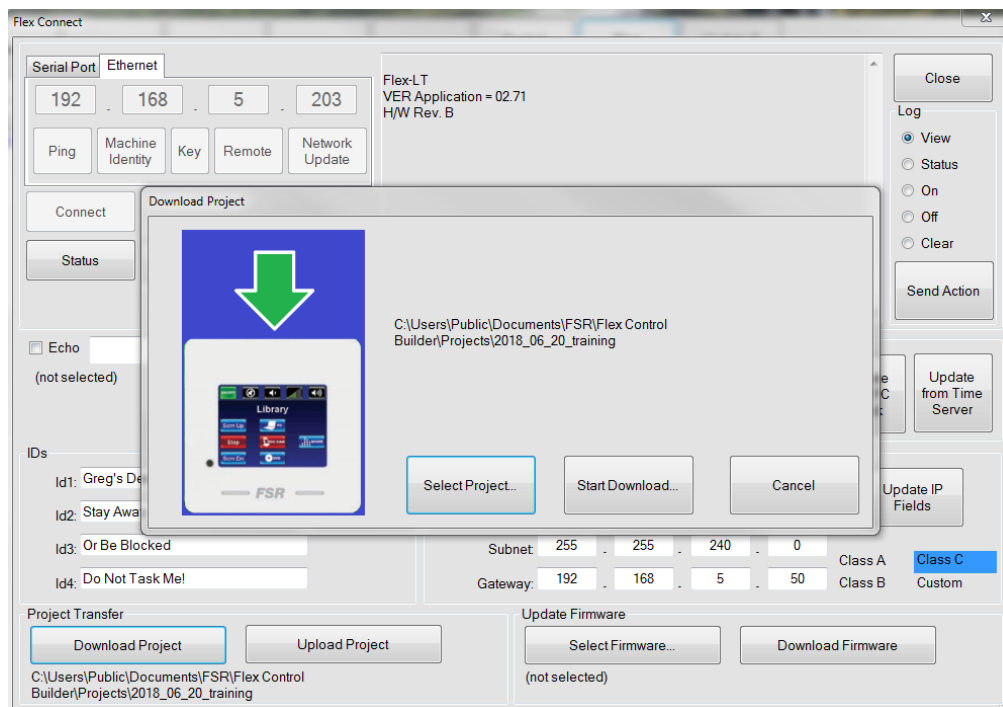
Connect to your initial Flex manual through an ethernet connection.



Once connected to your Flex device, send the project you wish to use into the Panel by clicking the “Download Project” button.

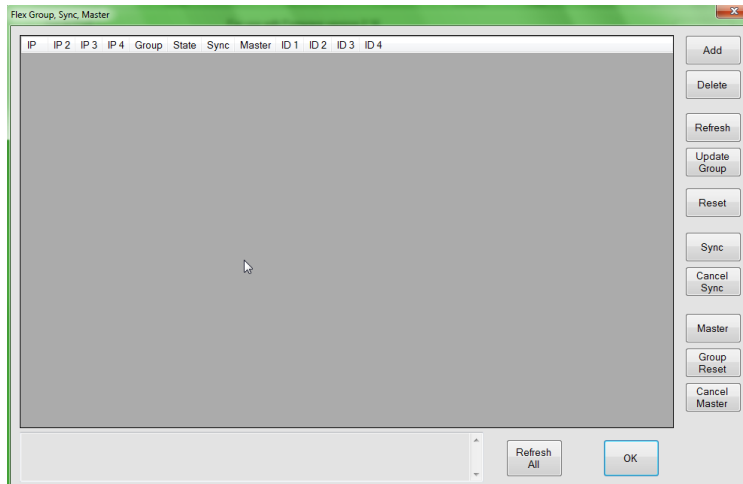


From there click the “Select Project” button which will prompt you to choose the project you wish to send to your Flex device. Repeat this process for each of the Flex devices you wish to synchronize in sync mode.

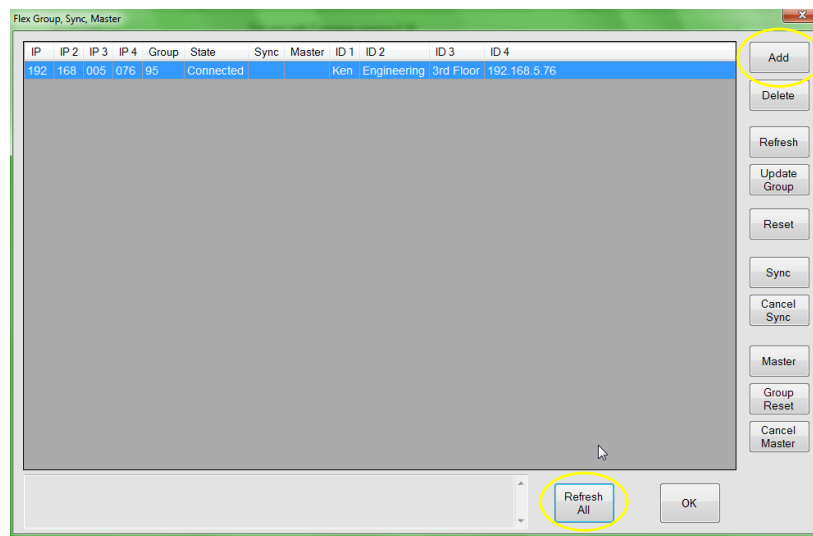


Add the Flex Panels

Once all the Flex panels are running the same project, click on the Group Sync. Master button found in the Flex Connect pop-up window. This will open a window pictured below.



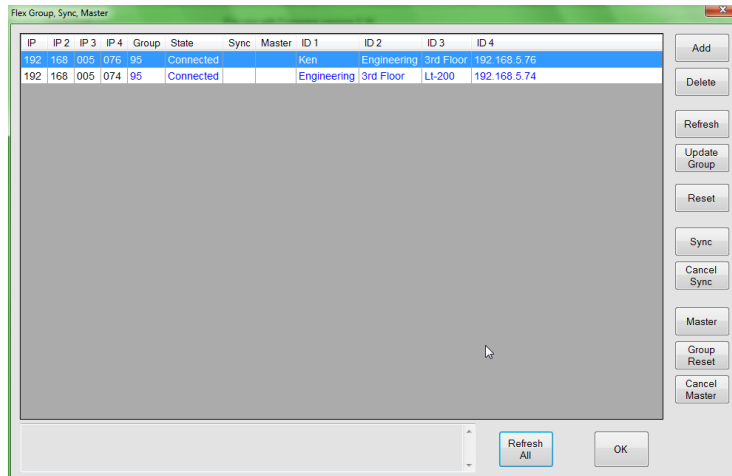
Click the add button and enter the IP address on the first Flex in the group. It will also prompt you to add a group number. Any number between 1 and 99 is an acceptable group number. Choose a group number which all Flex panels in your sync will be included in. Then click the Refresh All button at the bottom of the screen.



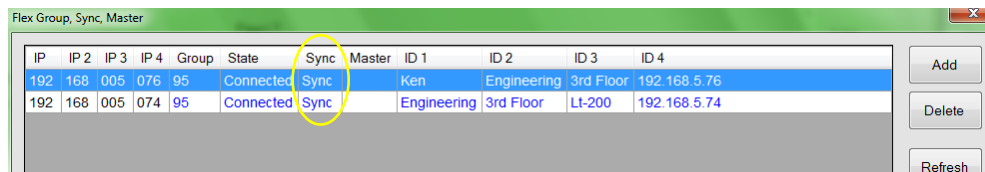
Complete these steps for all the Flex panels you wish to sync. You can add as many Flex devices as you would like but sync mode requires at least two in the network. Once all the panels have been added click the Refresh All button again.

Synchronize the Flex Panels

Notice the IP address, Group Number, and ID fields (if any) are filled while the Sync and Master fields are blank. In this step we will proceed to sync the devices.

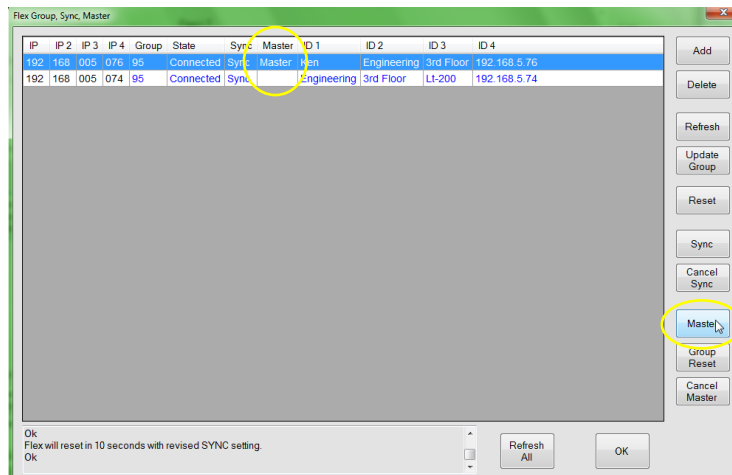


Select any one of the Flex panels and click on the Sync button. That Flex will reboot after 10 seconds. Do this for each panel. Each time the selected panel will reboot after 10 seconds. After all the panels have been synced, click the “Refresh All” button again to assure each Flex reports back as Synced.



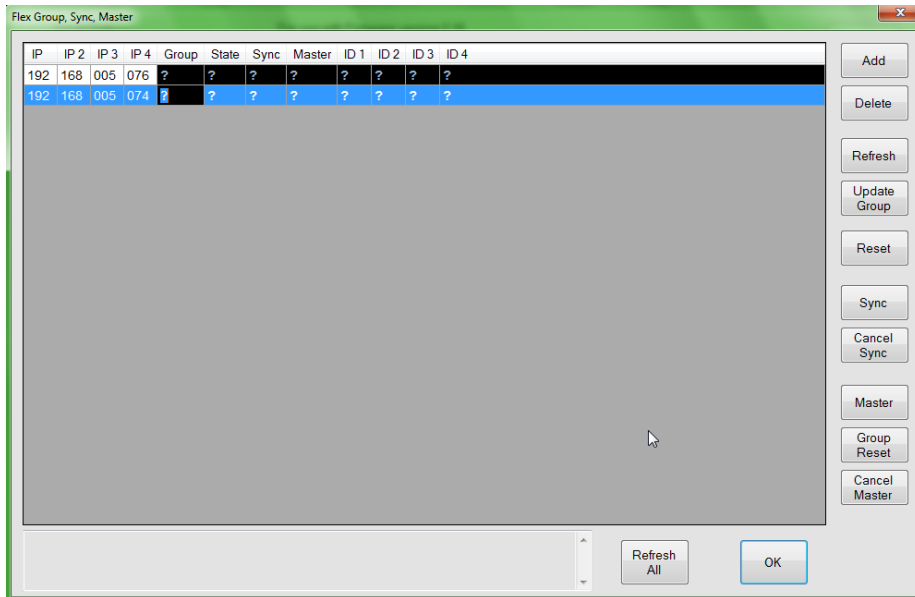
Choosing a Master

Select the Flex Panel that you wish to be the “Master” and click the Master button. If you click the “Refresh All” button again Master should appear in the Master field of the chosen Panel.

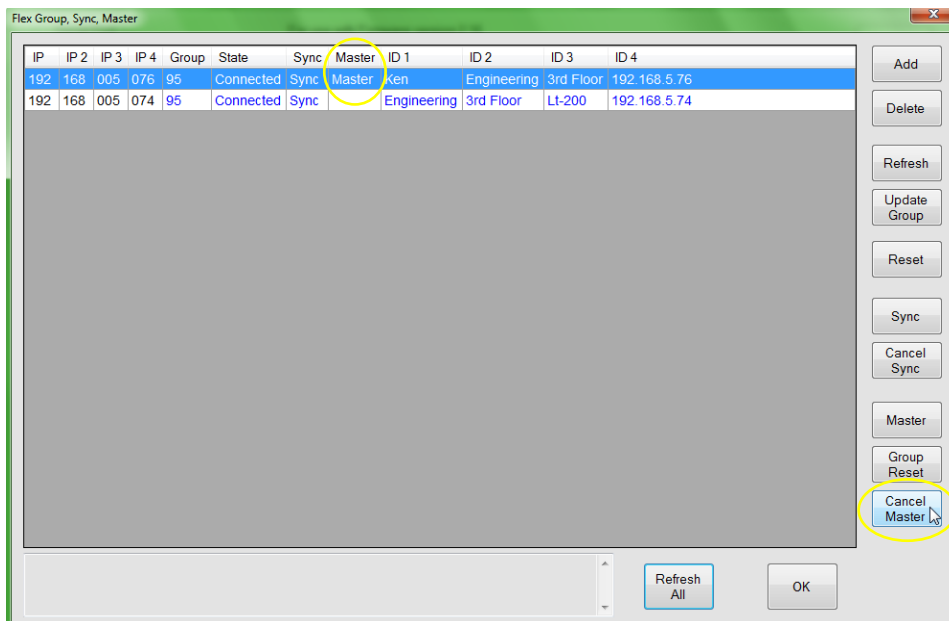


Turning Off Sync

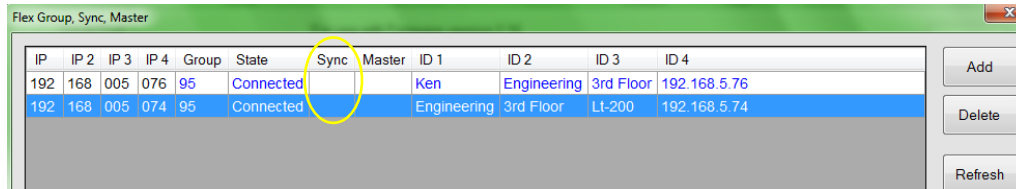
Start by connecting to one of the Flex panels in the sync group. This is done by again clicking on the “Flex Connect” button in the project tool bar and entering the IP address. Once connected, again click the “Group Sync Master” button. Click the “Add” button and input the IP addresses of each of the synched Flex panels.



Click the “Refresh All” button and locate the Flex panel labeled the Master. Select the Master panel and then click on the “Cancel Master” button.



Next select a Flex panel and click Cancel Sync. Do this for each of the Flex panels in the group. Once this is done for each Flex, the panels are no longer synced. Click Refresh All again to assure the sync field is blank for all the panels.



IP	IP 2	IP 3	IP 4	Group	State	Sync	Master	ID 1	ID 2	ID 3	ID 4
192	168	005	076	95	Connected			Ken	Engineering	3rd Floor	192.168.5.76
192	168	005	074	95	Connected			Engineering	3rd Floor	Lt-200	192.168.5.74

It is not necessary to change the group of the Flex panels. Unless sync mode is enabled again, it will have no effect on the panel.

****Note:** Syncing can also be done through a serial port but must be done individually on each Flex device. You will notice the “Add” button is grayed out in your Master Group Sync pop up window.

For additional information on programming and actions of the buttons, devices, screens, and so on please feel free to call: (973)-785-4347, email us at techsupport@fsrinc.com, or visit our website at www.fsrinc.com.