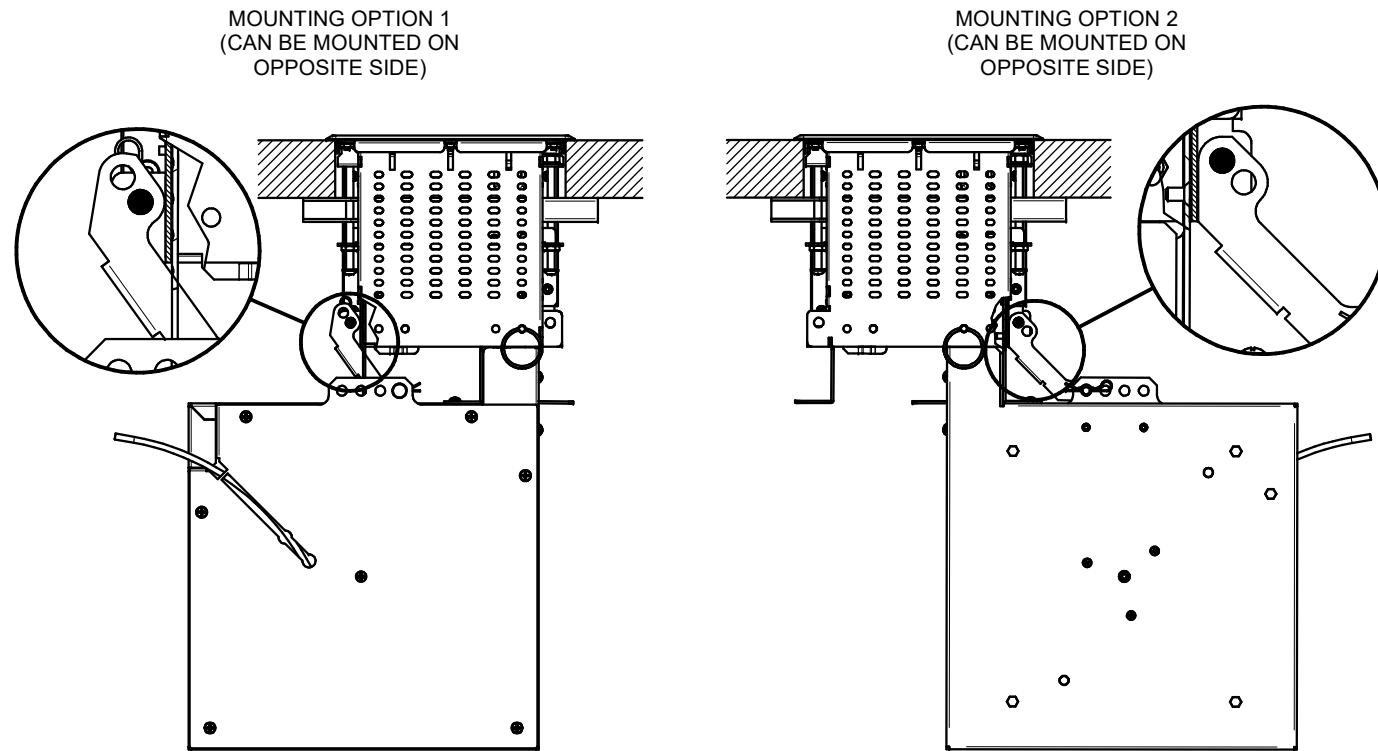
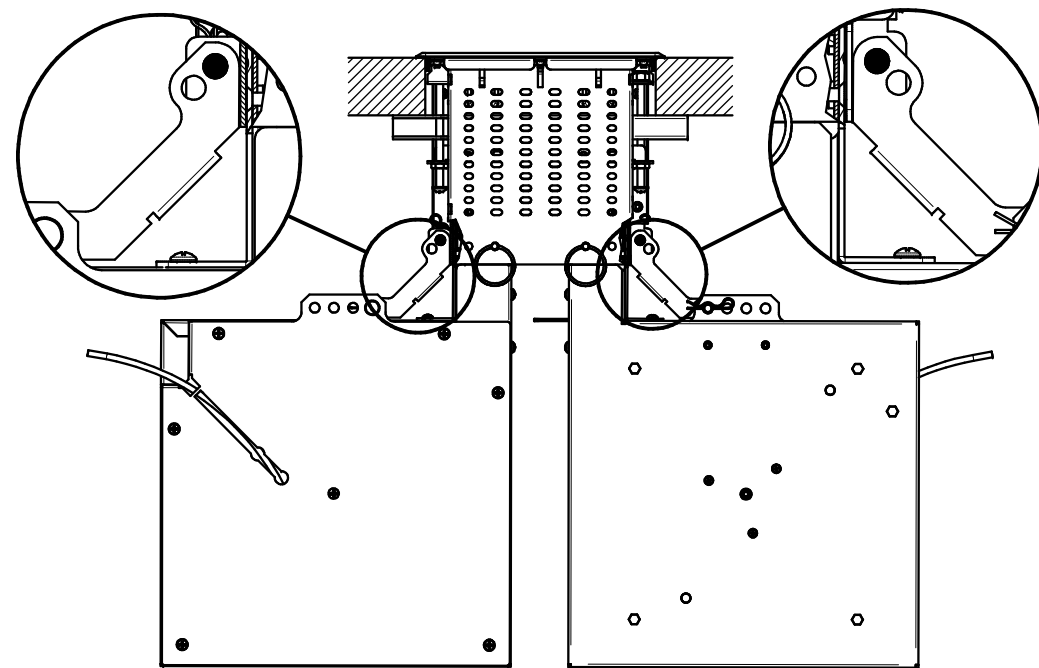


**TBRT MOUNTING OPTIONS:**

MOUNTING ON ONE SIDE OF ASSEMBLY



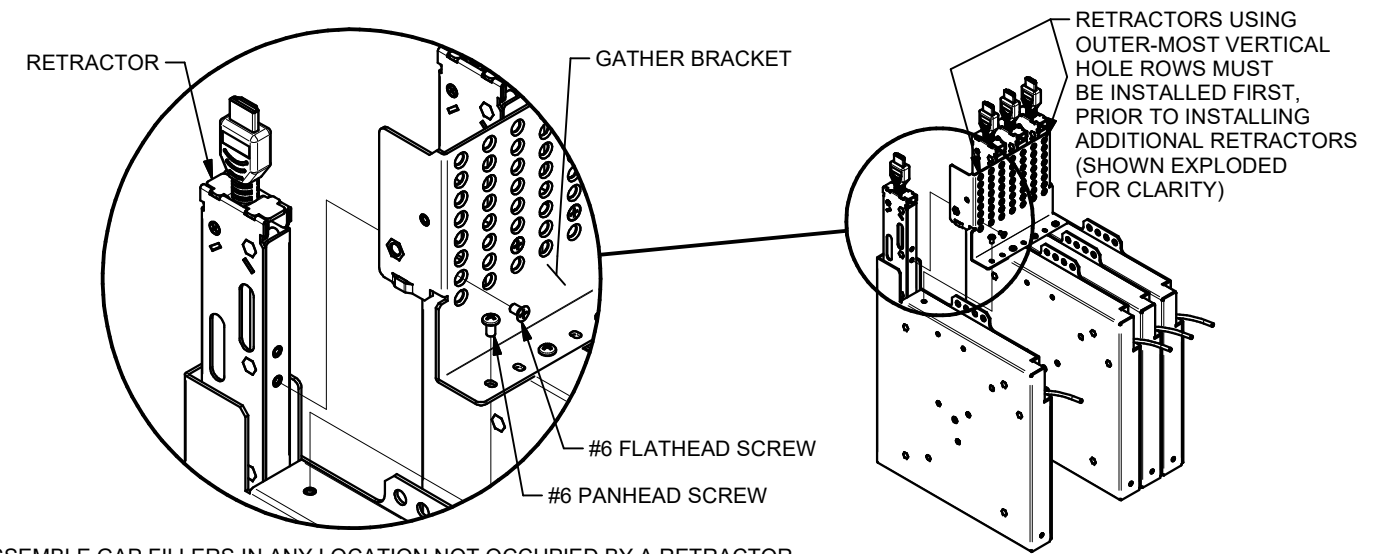
MOUNTING ON BOTH SIDES OF ASSEMBLY



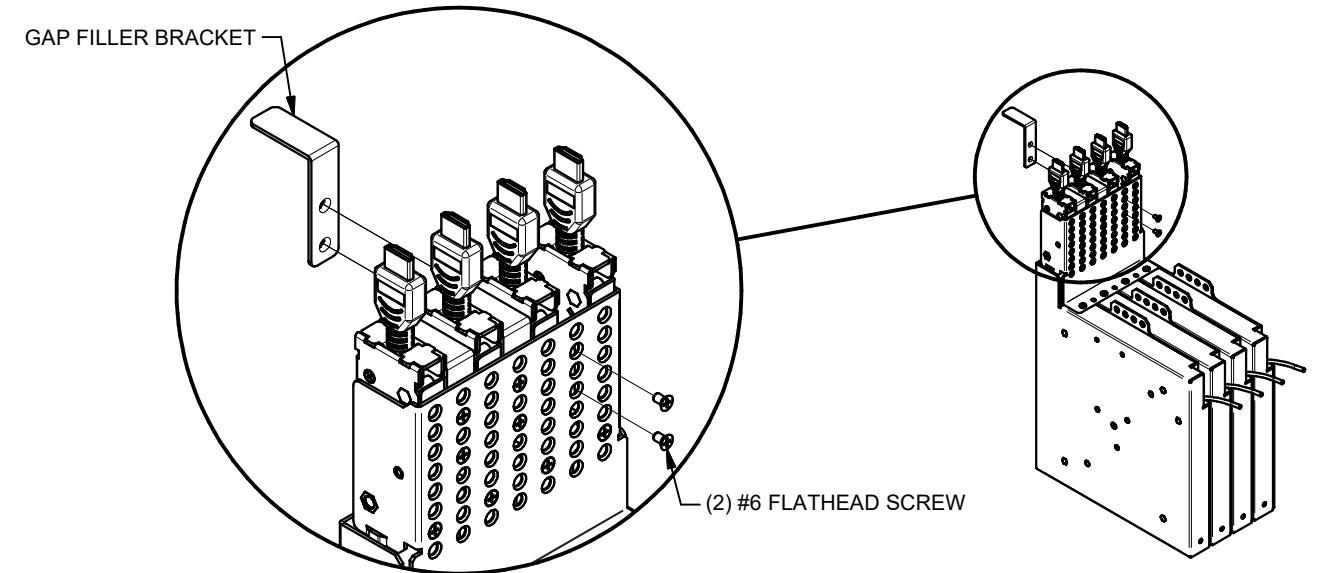
**FSR TBRT-SERIES (for RT6-S3 / S4) CABLE RETRACTOR INSTALLATION INSTRUCTIONS**

244 Bergen Boulevard, Woodland Park, NJ 07424, Phone: 973.785.4347 - Fax: 973.785.4207

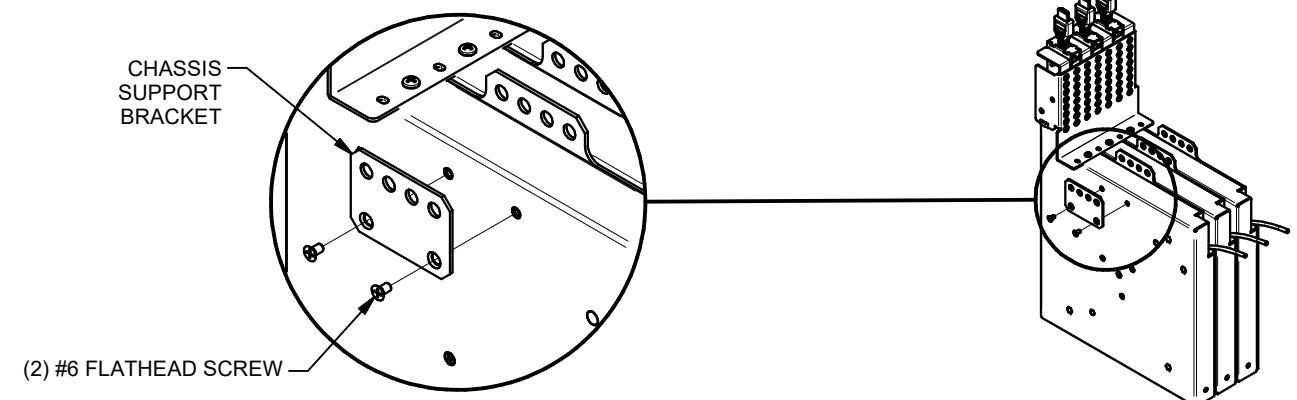
1a. ASSEMBLE RETRACTORS (SOLD SEPARATELY) AS REQUIRED ONTO GATHER BRACKET (4 RETRACTORS SHOWN). MOUNT 1-4 RETRACTORS IN ANY LOCATION.



1b. ASSEMBLE GAP FILLERS IN ANY LOCATION NOT OCCUPIED BY A RETRACTOR, AT THE DESIRED HEIGHT.

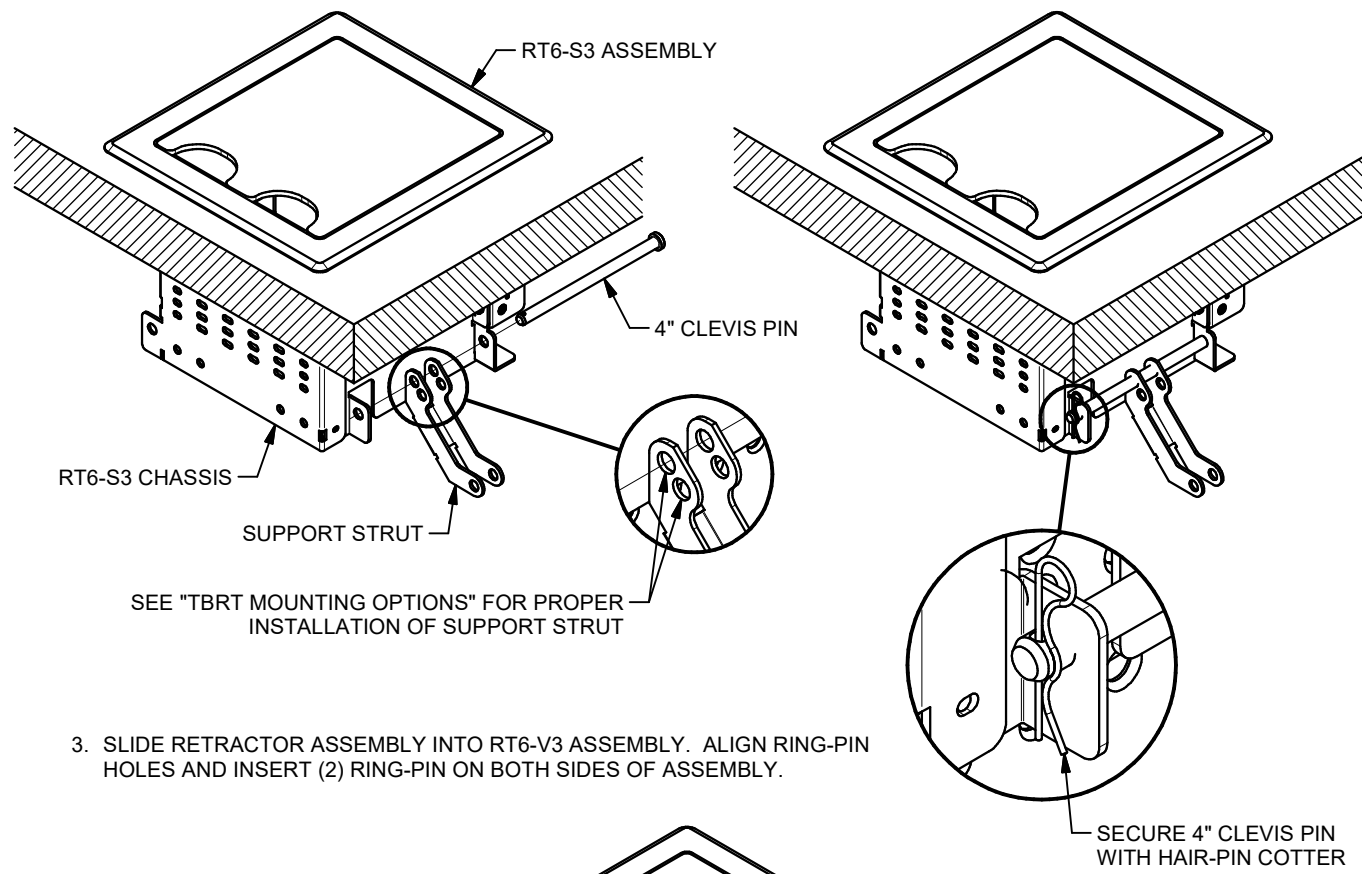


1c. INSTALL CHASSIS SUPPORT BRACKET. 1 REQUIRED FOR 1 RETRACTOR INSTALLED. FOR 2-4 RETRACTORS SUPPORT BRACKET IS OPTIONAL.



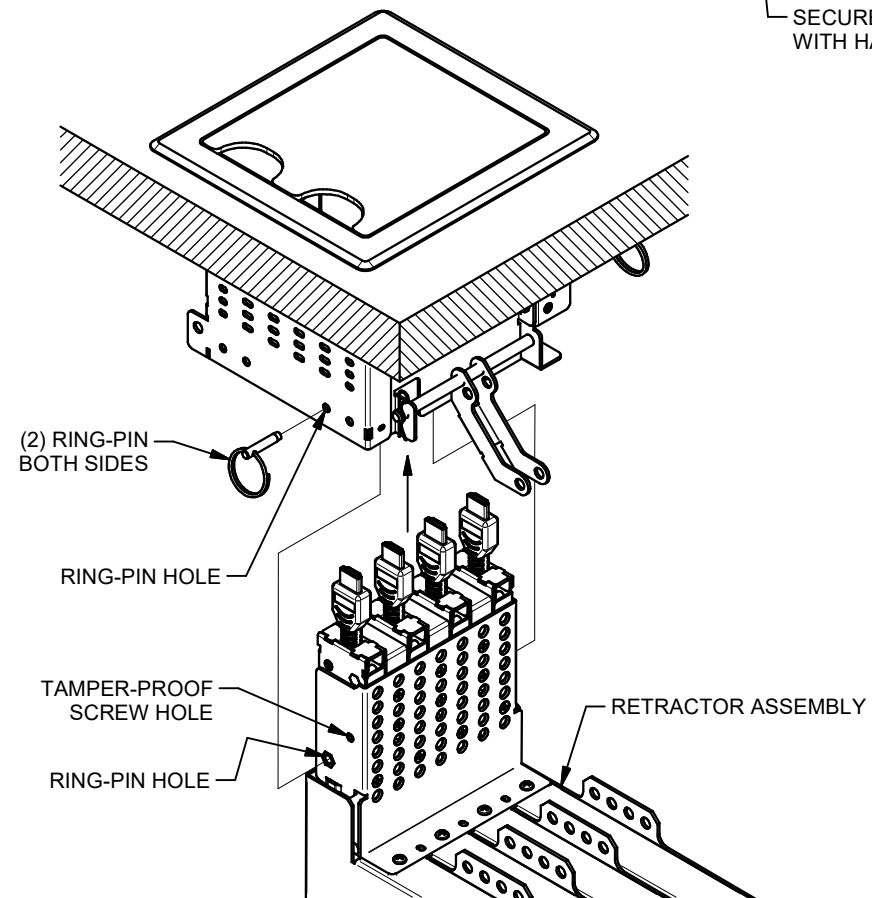
**TYPICAL HARDWARE INSTALLATION. SEE "TBRT MOUNTING OPTIONS" FOR PROPER INSTALLATION OF SUPPORT STRUT.**

2. INSTALL SUPPORT STRUT ONTO RT6-S3 CHASSIS WITH 4" CLEVIS PIN AND SECURE WITH HAIR-PIN COTTER.



SEE "TBRT MOUNTING OPTIONS" FOR PROPER INSTALLATION OF SUPPORT STRUT

3. SLIDE RETRACTOR ASSEMBLY INTO RT6-V3 ASSEMBLY. ALIGN RING-PIN HOLES AND INSERT (2) RING-PIN ON BOTH SIDES OF ASSEMBLY.



SECURE 4" CLEVIS PIN WITH HAIR-PIN COTTER

4. ALIGN SUPPORT STRUT HOLE WITH RETRACTOR FLANGE HOLES AND INSERT APPROPRIATE-LENGTH CLEVIS PIN. SECURE CLEVIS PIN WITH HAIR-PIN COTTER. FOR ADDITIONAL TAMPER-PROOF INSTALLATION, INSTALL (2) #6-32 x 1/4 LONG PAN HEAD SCREW.

