



SB-200 INSTALLATION INSTRUCTIONS

244 Bergen Boulevard, Woodland Park, NJ 07424, Phone: 973.785.4347 - Fax: 973.785.4207

NOTES:

SB-200 MUST BE SECURED TO THE BUILDING STRUCTURE AND BE PLUMB AND LEVEL.

MOUNTING HARDWARE SIZE USED MUST BE 1/2-13 GRADE 5 OR BETTER (or M12 x 1.75 CLASS 8.8 OR BETTER), WITH WASHERS AND LOCK WASHERS/THREADLOCKING COMPOUND AS REQUIRED.

BUILDING STRUCTURE MUST BE ABLE TO SUPPORT A LOAD OF 12,000 POUNDS IN ORDER TO MAINTAIN THE FULL RATING AND 5x SAFETY FACTOR OF THE SB-200 AT FULL RATED LOAD. CONSULT A STRUCTURAL ENGINEER TO VERIFY ADEQUACY OF ATTACHMENT POINT.

LOAD APPLIED TO HANGER TUBE MUST NOT EXCEED 1,000 POUNDS INCLUSIVE OF ANY DYNAMIC LOADING CONDITIONS AND/OR DERATING FACTORS FOR SLING ANGLES.

LOAD APPLIED TO HOIST RING MUST NOT EXCEED 2,300 POUNDS INCLUSIVE OF ANY DYNAMIC LOADING CONDITIONS AND/OR DERATING FACTORS FOR SLING ANGLES.

TOTAL COMBINED LOAD MUST NOT EXCEED 2,300 POUNDS AND MUST ALSO COMPLY WITH INDIVIDUAL MOUNTING POINT LIMITS LISTED ABOVE.

ENSURE ALL MECHANICAL AND ELECTRICAL FITTINGS, WIRING, CONNECTORS AND INSTALLATION DETAILS CONFORM TO ALL APPLICABLE CODES.

LOADS MUST BE APPLIED GRADUALLY. DO NOT APPLY SHOCK LOADS.

OBSERVE ALL SAFETY AND MAINTENANCE INSTRUCTIONS PROVIDED WITH THE JERGENS HOIST RING.

OPERATING SAFETY:

NEVER EXCEED THE CAPACITY OF THE SWIVEL HOIST RING OR HANGER TUBE.

WHEN USING LIFTING SLINGS OF TWO OR MORE LEGS, MAKE SURE THE FORCES IN THE LEGS ARE CALCULATED USING THE HORIZONTAL SLING ANGLE TO THE LEG TO VERIFY THE W.L.L. IS NOT EXCEEDED.

APPLY PARTIAL LOAD AND CHECK PROPER ROTATION AND ALIGNMENT. THERE SHOULD BE NO INTERFERENCE BETWEEN LOAD (WORKPIECE) AND HOIST RING BAIL, TUBE OR HOUSING BEFORE APPLYING FULL LOAD.

INSPECTION / MAINTENANCE:

ALWAYS INSPECT HOIST RING AND HANGER TUBE BEFORE USE.

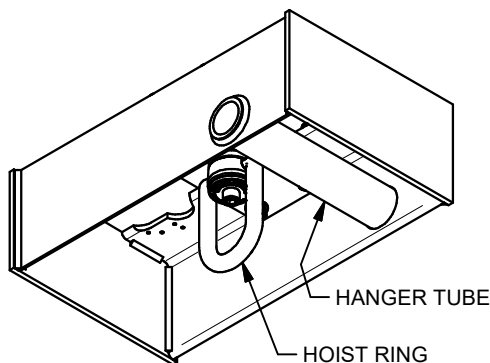
NEVER USE HOIST RING OR HANGER TUBE THAT SHOWS SIGNS OF CORROSION, WEAR OR DAMAGE.

NEVER USE HOIST RING OR HANGER TUBE THAT IS BENT OR ELONGATED.

ALWAYS CHECK HOIST RING AND SB-200'S MOUNTING BOLTS WITH A TORQUE WRENCH BEFORE USING.

PRIOR TO LOADING, ENSURE FREE MOVEMENT OF HOIST RING BAIL. THE BAIL SHOULD PIVOT 180 DEGREES AND SWIVEL 360 DEGREES.

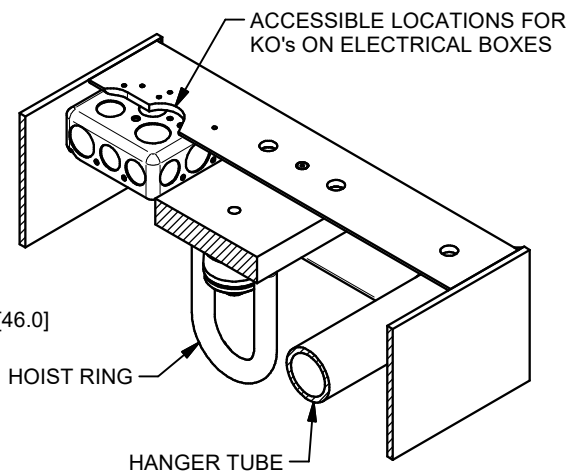
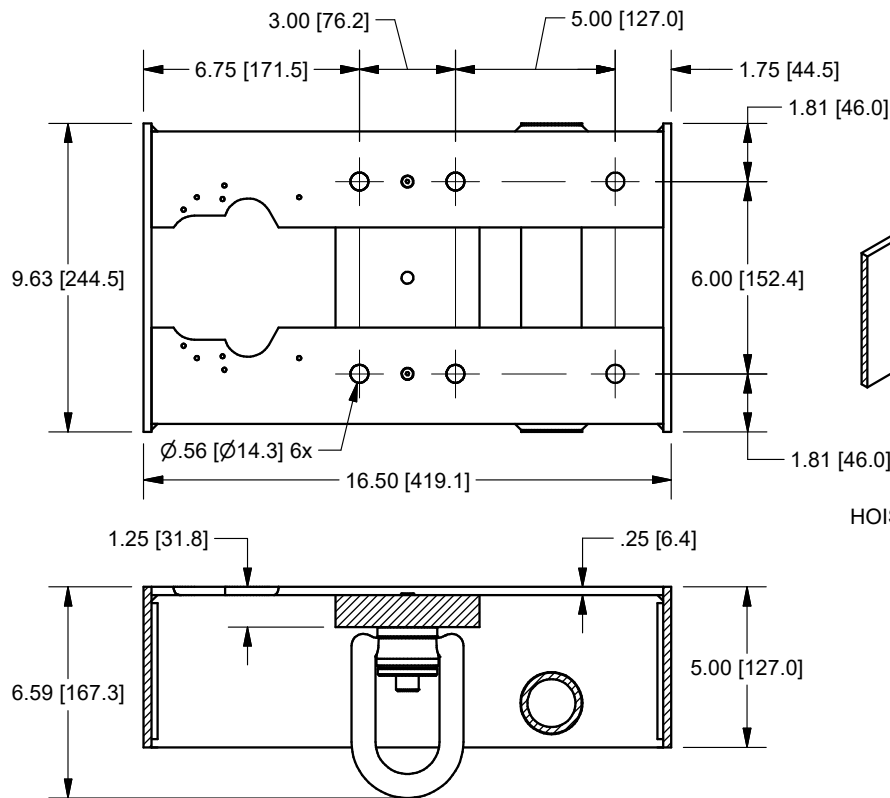
WHEN A HOIST RING IS USED IN A SIDE LOAD APPLICATION, ENSURE EQUAL LOADING ON THE BAIL PINS BY ALIGN THE BAIL.



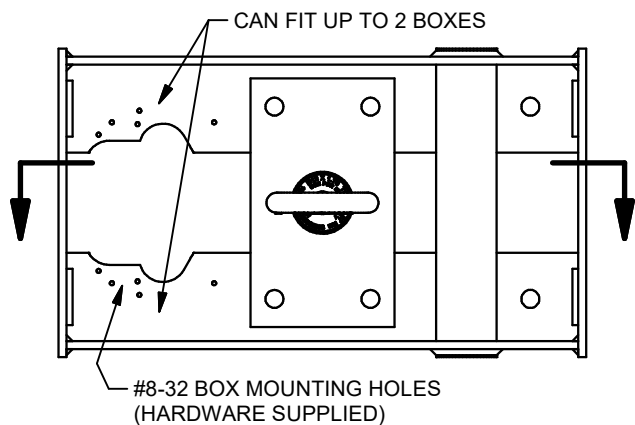
CONSULT A STRUCTURAL ENGINEER TO VERIFY LOAD RATING OF BUILDING STRUCTURE AND ATTACHMENT MEANS.

HANGER TUBE W.L.L. 1,000 LBS.
HOIST RING W.L.L. 2,300 LBS.
COMBINED W.L.L. 2,300 LBS.

OBSERVE ALL SAFETY INSTRUCTIONS
AVAILABLE AT www.fsrinc.com



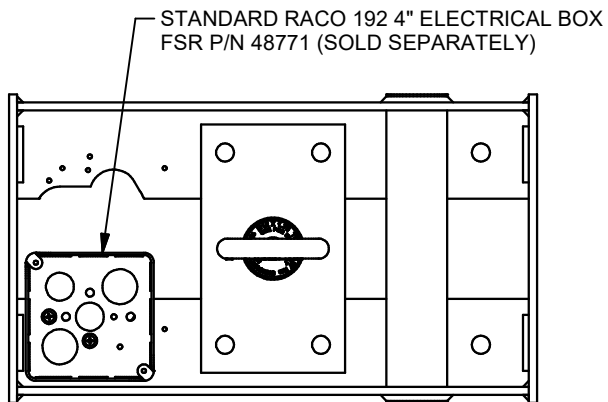
SECTION



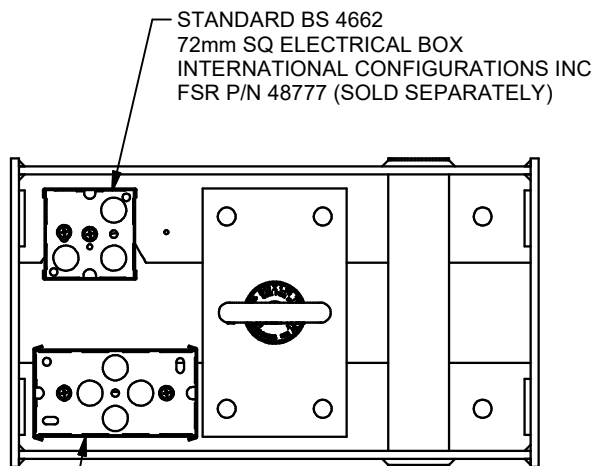
CONSULT A STRUCTURAL ENGINEER TO VERIFY LOAD RATING OF BUILDING STRUCTURE AND ATTACHMENT MEANS.

HANGER TUBE W.L.L. 1,000 LBS.
HOIST RING W.L.L. 2,300 LBS.
COMBINED W.L.L. 2,300 LBS.

OBSERVE ALL SAFETY INSTRUCTIONS
 AVAILABLE AT www.fsrinc.com



US BOXES



EURO BOXES

STANDARD BS 4662
 135mm x 75mm ELECTRICAL BOX
 INTERNATIONAL CONFIGURATIONS INC
 FSR P/N 48778 (SOLD SEPARATELY)