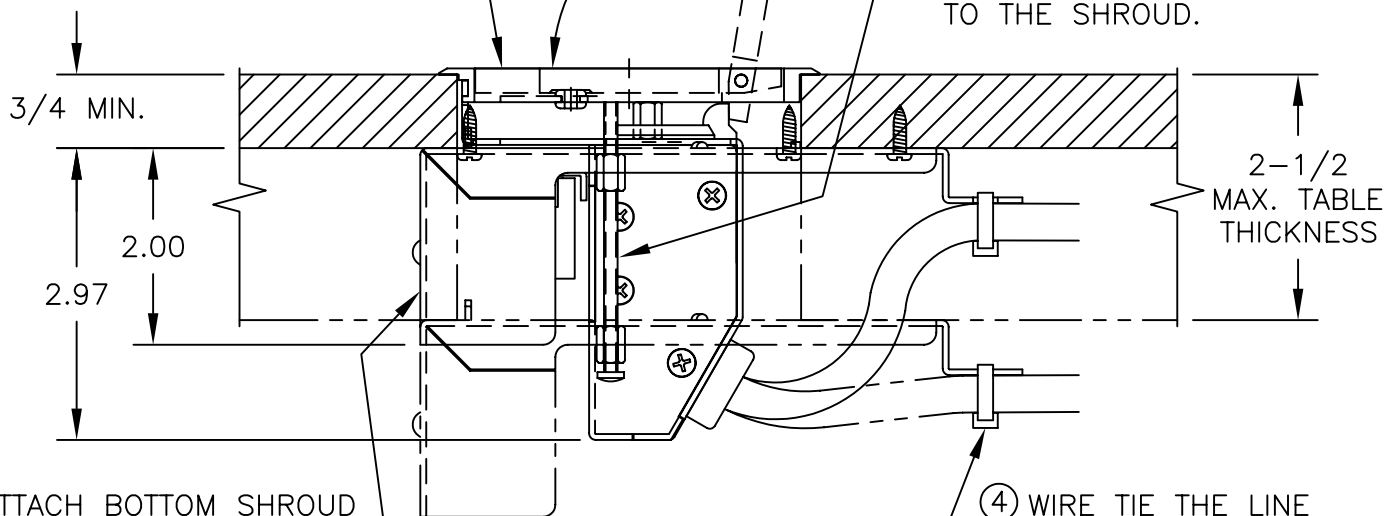


② DROP T3-PC1 ASSEMBLY INTO THE TABLE HOLE

100° MAX.

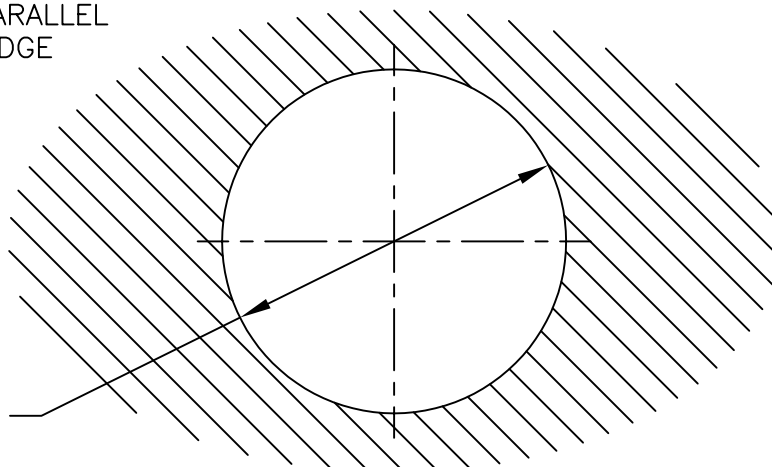
③ INSTALL (2) LONG CLAMPING SCREWS THRU THE SHROUD INTO THE COVER RIM, AND SNUG THE LONG NUTS UP TO THE SHROUD.



① ATTACH BOTTOM SHROUD TO BOTTOM OF TABLE, FORMED FACE PARALLEL TO THE TABLE EDGE

④ WIRE TIE THE LINE CORD, AND OTHER WIRES AS NECESSARY

HOLE IN TABLE:
3-1/2"
DIA. THRU



FSR

244 BERGEN BLVD.
WEST PATERSON, NJ 07424
PH.#: (973) 785-4347

Project: T3-PC1

Dwg. No.: A-1719
File: G:\A-FILES

Description: ASSEMBLY &
TABLE INSTALLATION

Drawn: FRL

Scale: 1:2

Checked: **D Hansen**

Date: 04/18/05