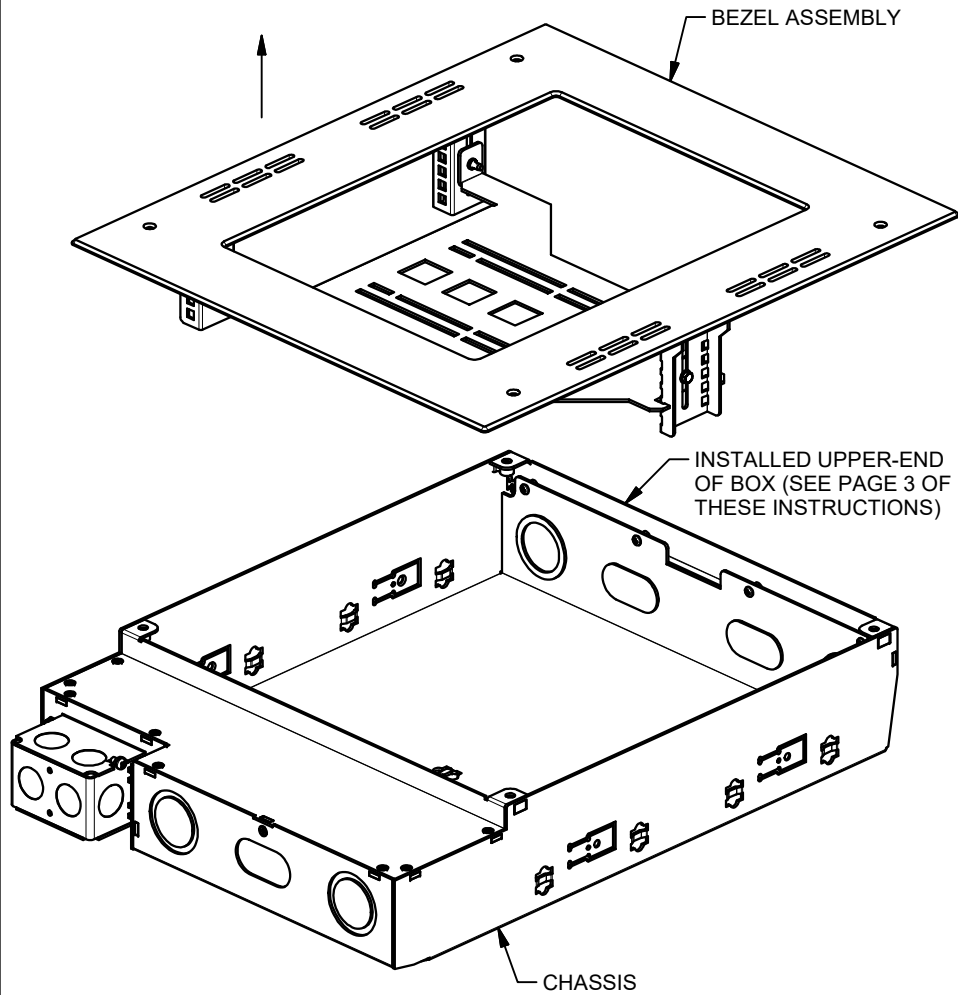


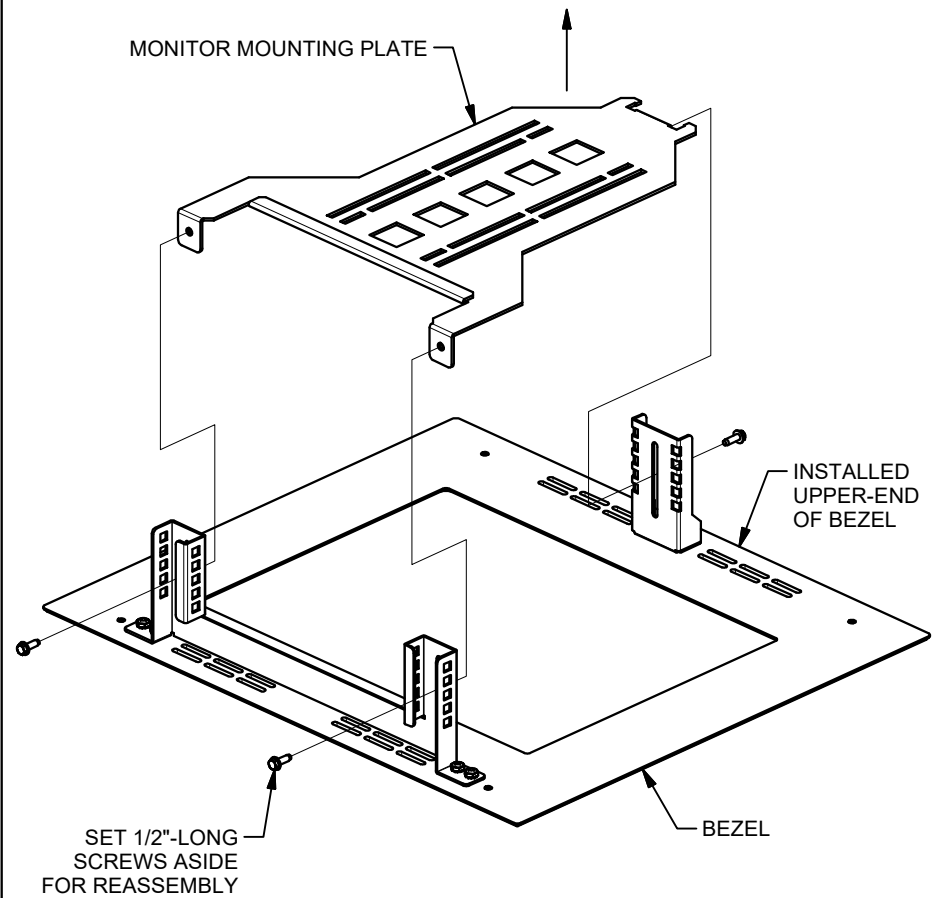
4 3

AFTER UNPACKING MWB-15, REMOVE BEZEL ASSEMBLY FROM ITS NESTED POSITION IN THE CHASSIS.



2 1

FLIP BEZEL ASSEMBLY OVER ONTO A SURFACE THAT WON'T SCRATCH THE FACE OF THE BEZEL, AND SEPARATE MONITOR MOUNTING PLATE FROM BEZEL.

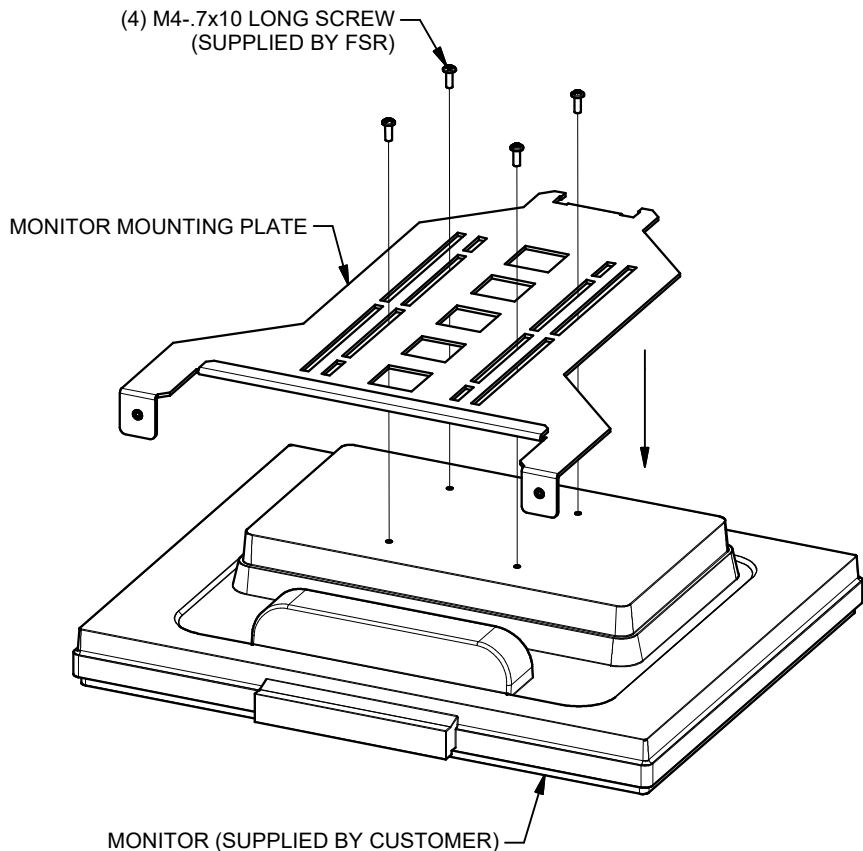


43031

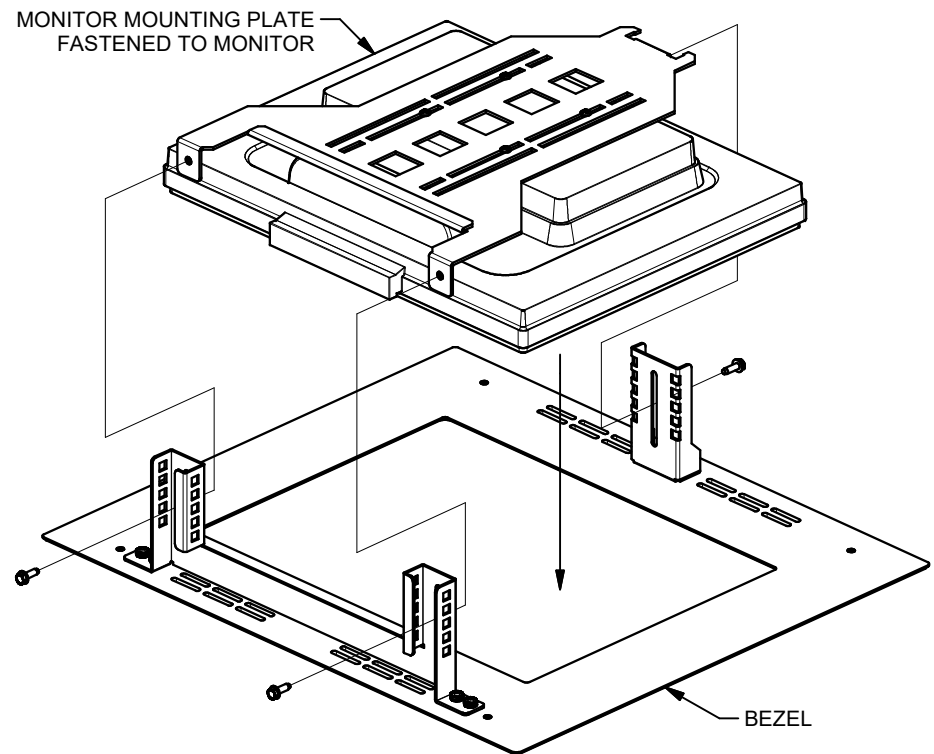
**FSR inc.**  
 244 BERGEN BLVD.  
 W. PATERSON, NJ 07424  
 TEL (973) 785-4347  
 FAX (973) 785-3318

TITLE: MWB-15 INSTALLATION INSTRUCTIONS  
 DRAWN BY: JRE DATE: 10/22/19 REV: 03  
 DWG#: LIT1438A PAGE: 1 OF 4 SCALE: 1:5

PLACE MONITOR MOUNTING PLATE ON MONITOR REAR SURFACE, LINING UP APPROPRIATE PLATE SLOTS ON THE VESA-75 OR -100 THREADED-HOLE PATTERN USED ON THE MONITOR. FOR MONITORS THINNER THAN 1.31" (1-5/16", OR 33.3mm), FLIP THE 'MONITOR MOUNTING PLATE' OVER 180-DEGREES (PLATE TABS POINTING AWAY FROM MONITOR), AND CONTINUE WITH THE ASSEMBLY INSTRUCTIONS. INSTALL SUPPLIED SCREWS SLIGHTLY SNUG BUT DO NOT TIGHTEN DOWN, AS MONITOR POSITION ADJUST- MENT IS REQUIRED AFTER REINSTALLATION OF PLATE ONTO BEZEL ASSEMBLY.



REINSTALL MONITOR MOUNTING PLATE (WITH MONITOR) ONTO BEZEL ASSEMBLY, ENSURING THE MONITOR'S OUTER RIM RESTS, ALL AROUND, ON BEZEL'S REAR SURFACE. MAINTAIN THIS POSITION BY COMPLETELY TIGHTENING ORIGINAL HEX-HEAD SCREWS.



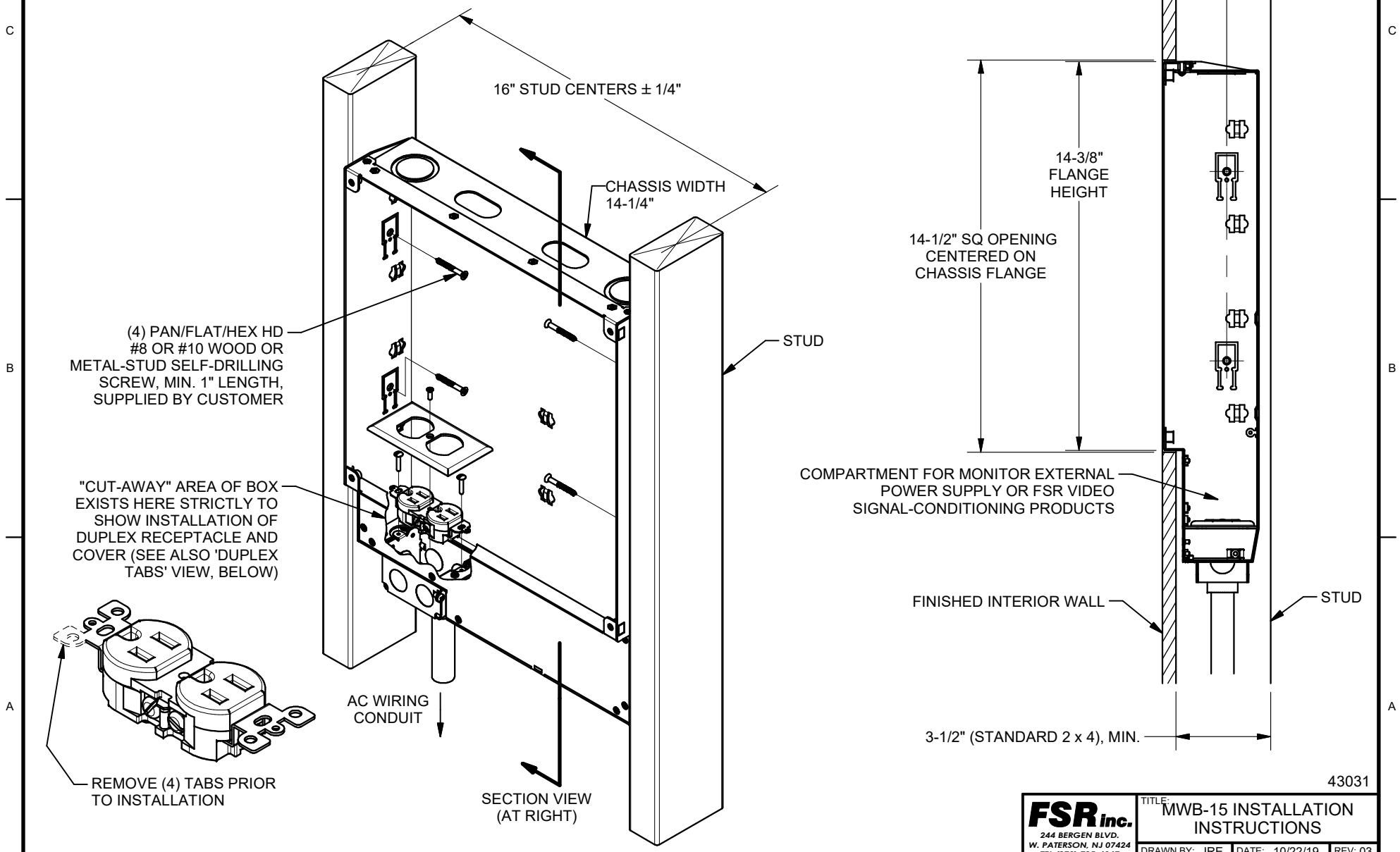
ADJUST THE LOCATION OF THE MONITOR'S VIEWING SCREEN SO THAT IT'S CENTERED IN THE OPENING IN THE BEZEL, AND CHECK THIS ADJUSTMENT BY FLIPPING THE ASSEMBLY UP OR OVER, UNTIL PROPER SCREEN LOCATION IS ACHIEVED. TIGHTEN ALL FOUR MONITOR SCREWS TO MAINTAIN IT'S POSITION.

43031

**FSR inc.**  
244 BERGEN BLVD.  
W. PATERSON, NJ 07424  
TEL (973) 785-4347  
FAX (973) 785-3318

TITLE: MWB-15 INSTALLATION  
INSTRUCTIONS  
DRAWN BY: JRE | DATE: 10/22/19 | REV: 03  
DWG#: LIT1438 | PAGE: 2 OF 4 | SCALE: 1:5

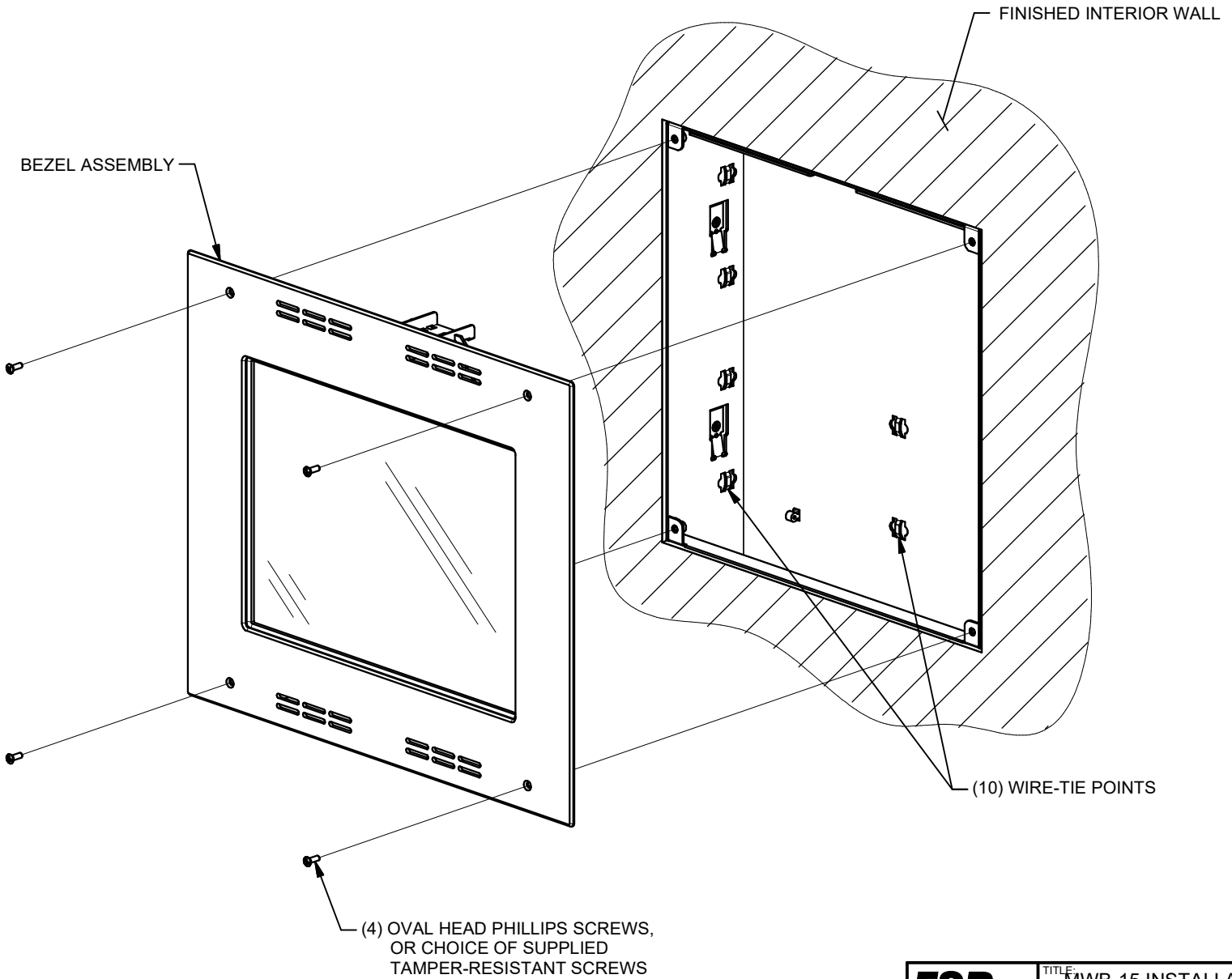
MWB-15 CHASSIS HEIGHT FROM FINISHED FLOOR TO BE DETERMINED BY CUSTOMER. INTERIOR WALL OPENING IS 14-1/2"-SQUARE, CENTERED ON STUD-TO-STUD-DISTANCE CENTERLINE.



43031

<b>FSR inc.</b> 244 BERGEN BLVD. W. PATERSON, NJ 07424 TEL (973) 785-4347 FAX (973) 785-3318	TITLE: MWB-15 INSTALLATION INSTRUCTIONS		
	DRAWN BY: JRE	DATE: 10/22/19	REV: 03
	DWG#: LIT1438	PAGE: 3 OF 4	SCALE: 1:5

PRIOR TO FINAL ASSEMBLY, MAKE ALL WIRING CONNECTIONS BETWEEN CHASSIS AND MONITOR IN THE BEZEL ASSEMBLY, AS REQUIRED.



43031

**FSR inc.**  
244 BERGEN BLVD.  
W. PATERSON, NJ 07424  
TEL (973) 785-4347  
FAX (973) 785-3318

TITLE: MWB-15 INSTALLATION  
INSTRUCTIONS  
DRAWN BY: JRE | DATE: 10/22/19 | REV: 03  
DWG#: LIT1438 | PAGE: 4 OF 4 | SCALE: 1:5