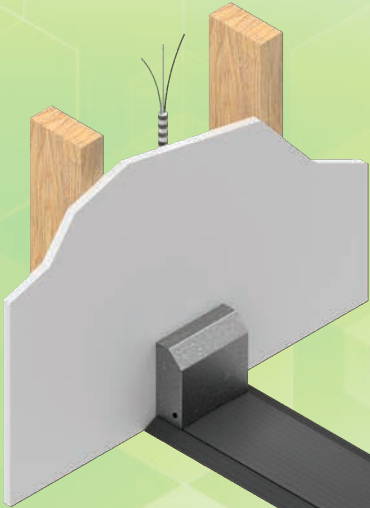


SMART-WAY ON-FLOOR RACEWAY

The Intelligent Choice



(Slate color option shown)

Our brand-new floor wire management system installs on top of any flooring for a quick installation. The system has the capacity to hold (14) 12 AWG (.130" diameter) power conductors, and (9) CAT 5E (.215" diameter), or (5) CAT 6A (.250" diameter) data cables, and is sold in 6 foot sections. The Smart-Way is a way to provide power and data, but also clean up messy cables and wires. Available in two color options, aluminum and slate powder.

(Electrical devices provided by customer)



PARTS

Smart-Way On-Floor Raceway

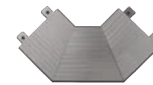
Smart-Way On-Floor Raceway			MSRP
18203	SW-T72-ALM	72" Track Aluminum	\$230
18204	SW-T72-SLT	72" Track SLT	\$230
18206	SW-END-SLT	Track End Stop	\$ 25
18207	SW-L90-ALM	90 Degree Corner Aluminum	\$125
18208	SW-L90-SLT	90 Degree Corner SLT	\$125
18211	SW-DB-1P1D	Device Box 2 Gang 1 Power 1 Data	\$115
18212	SW-DB-2P	Device Box 2 Gang 2 Power	\$115
18213	SW-DB-2D	Device Box 2 Gang 2 Data	\$115
18214	SW-DB-2P1D	Device Box 3 Gang 2 Power 1 Data	\$115
18215	SW-DB-1P2D	Device Box 3 Gang 1 Power 2 Data	\$115
18216	SW-DB-1HWP1D	Device Box 2 Gang 1 Hardwired Power 1 Data	\$115
18217	SW-WF-LP-ALM	Wall Feed Box Low Profile	\$ 42
18218	SW-WF-HP-ALM	Wall Feed Box High Profile	\$ 42
18219	SW-WF-LP-SLT	Wall Feed Box Low Profile	\$ 42
18220	SW-WF-HP-SLT	Wall Feed Box High Profile	\$ 42
18221	SW-WF-RCWY-ALM	Wall Feed from Raceway	\$109
18222	SW-WF-RCWY-SLT	Wall Feed from Raceway	\$109



18203



18204



18207



18211



18212



18213



18214



18216



18219



18220



18221

Smart-Way Stick (A complete wired unit with plug)

18223	SW-STK-1P1D-ALM	Stick 2 Gang 1 Power 1 Data	\$415
18224	SW-STK-1P1D-SLT	Stick 2 Gang 1 Power 1 Data	\$415
18225	SW-STK-2P-ALM	Stick 2 Gang 2 Power	\$415
18226	SW-STK-2P-SLT	Stick 2 Gang 2 Power	\$415

**SMART-WAY
STICK**



Smart-Way Stick
18226



1-800-332-FSR1 • www.fsrinc.com

