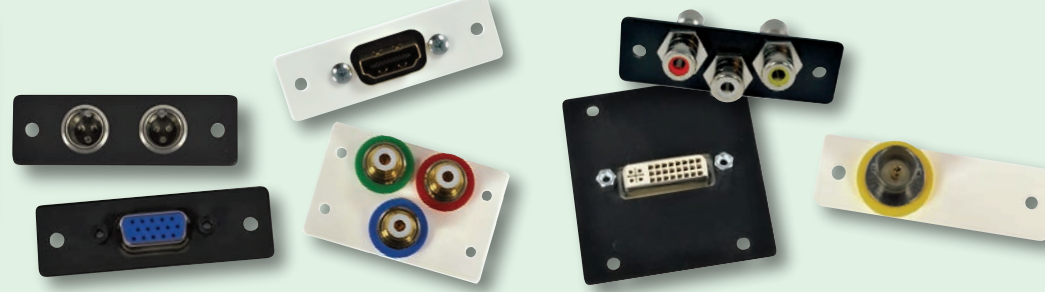


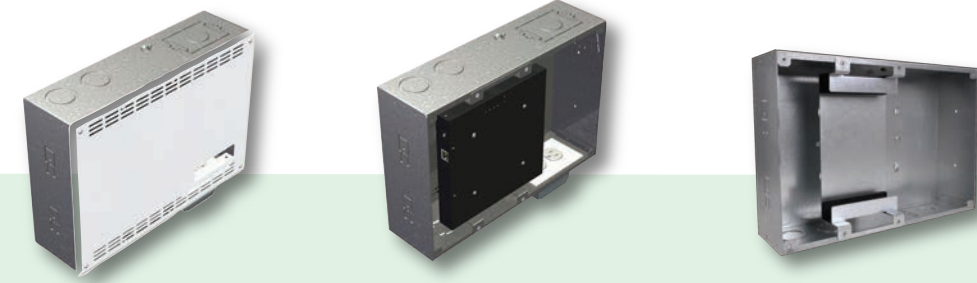
## INTELLIGENT PLATE SOLUTIONS



The IPS family of interconnect solutions offers a comprehensive selection of accessories, available in white, ivory or black. Simply select a plate that fits your application and available space. Then select your internal connector plate. IPS Plates come with a lifetime warranty.

We offer FREE standard labeling. Visit our web site and drag and drop your solutions with IPS Designer.

## MFG. MOUNTING SOLUTIONS



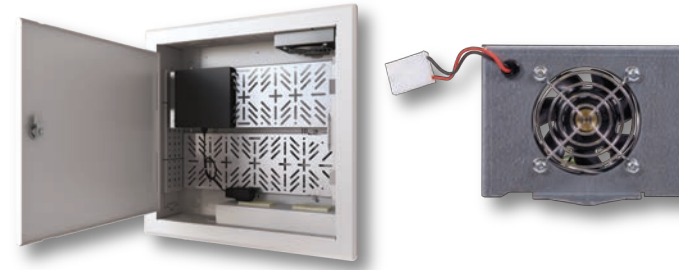
FSR now offers several "MMS" (Manufacturer Mounting Solutions) PWB housings. All models have the same basic features and include bracketry for specific manufacturer's components as listed under each model. These are designed to quickly and easily install behind a wall mounted display or a projector.

The component and power supply are mounted to a removable bracket which is then mounted to the PWB back box.

The back box is typically installed flush with the wall's surface, between either wood or steel studs. Mounting screws are included. A duplex box is also included and can be mounted at either the top or bottom duplex area on the back box. There are two 1" and 1.25" concentric knockouts on the top and bottom for cable.

### PWB-320 Cooling Fan

The PWB-320 Wall Box cooling Fan is a thermostat controlled variable speed fan. As the heat inside the wall box rises the speed of the fan will too, keeping equipment inside at a safe temperature. The maximum air flow the fan puts out is 25 cubic feet per minute.



**PWB-270**  
Flat Panel Display Wall  
Box for Crestron  
DM-RMC-SCALER-C Receiver



**PWB-280**  
The PWB-280 wall box is  
specifically designed to house  
the SVSi model N1000, N2000  
or N3000 series PoE powered  
encoders.



We offer PWB Series boxes that work  
with the Cisco 4400 Series Media Players.  
Contact the factory for more details.

## TOUCHSCREEN COVERS

### Surface & Flush Mount Locking Wall Covers

Our Surface and Flush Mount Locking Wall Covers provide secure, tamper-resistant protection for 7" and 10" touch panels without compromising visibility. Each flush mount model includes a built-in 2-gang back box, while both styles feature a clear acrylic window and locking metal enclosure to prevent accidental contact or interference. The surface-mount version is ideal for retrofits or areas with limited in-wall access, offering a clean, functional solution. The low-profile flush design blends into the wall, and a 180° hinge allows the door to open fully for easy access and maintenance.



Outdoor units and surface  
mount for concrete walls  
coming soon.



## ACCESSORIES

### The Perfect PoE/USB Charger

You can power and charge the iPad from a PoE-Ethernet drop without the need for AC line power. Mount this small cube in a 2-gang wall box behind the iPad wall mount. The PoE / USB charger will operate and charge the iPad supporting Apple's® charging standard. The PoE / USB Charger will also notify the iPad that it is connected to a charger avoiding annoying pop-ups.

### DC Powered USB Chargers

Our DC Powered USB chargers for your smart devices come in a variety of form factors to meet your requirements. The chargers incorporate the necessary firmware to communicate with your device and provide it the correct charging wattage, up to a full 12 watts. All models come complete with a universal power supply.



FSR wall box products meet the Build America Buy  
America Act (BABAA) and TAA requirements



Specifications are subject to change without notice.

© iPad is a registered trademark of Apple Inc., registered in the US and other countries.  
The products contained on these pages are not endorsed by or affiliated with Apple Inc.



FSR wall box products meet the Build America Buy  
America Act (BABAA) and TAA requirements



244 Bergen Boulevard · Woodland Park, NJ 07424  
800.332.FSR1 · 973.998.2300 · F: 973.785.3318  
W: fsrinc.com · E: sales@fsrinc.com

© 2022 FSR, Inc. All Rights Reserved

LIT1185T

## Protect and Secure your Infrastructure Connections



FSR wall box products meet the Build America Buy  
America Act (BABAA) and TAA requirements

FSR Works For You

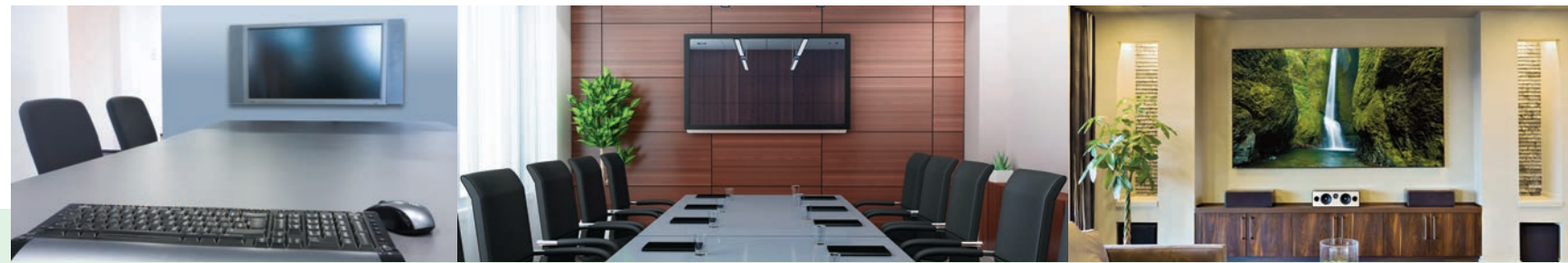


## PWB SERIES

### New Expanded Line.

Every wall-mounted flat screen needs a PWB! Mount a PWB in the wall and end the messy hanging cables! Power, data, interfaces and more mount discretely behind the flat screen. Covers are available in white or black. Neat and efficient cable management is just a PWB away.

The PWB-CMU8 is the first dedicated Masonry Wall Box engineered for installation in 8" block walls. The all-metal CMU8 is designed to replace the front portion of one block and, with the optional paintable cover, provides an attractive surface with no visible jagged block edges. The box has two opposing 2-gang device boxes inside, providing space for power and low voltage devices, including most receivers.



PWB-100



PWB-CMU8 Masonry Box



PWB-200



PWB-250

PWB-203 for 3" Walls

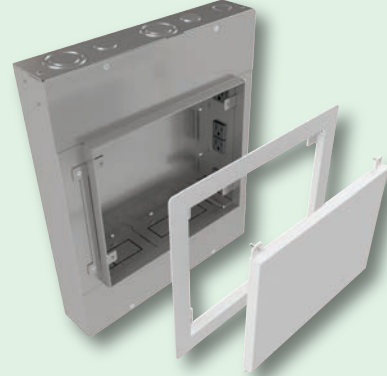
PWB-253 for 3" Wall



PWB-320/323



PWB-320/323XL



PWB-450 Large Project Wall Box



Patent 9,806,509

**FIRE RATED**



PWB-FR-450 Large Project Wall Box

Every wall-mounted flat screen needs a PWB.  
Mount a PWB in the wall and end the clutter of hanging cables and equipment.

## WB SERIES

The WB Series is an effective way to secure and protect wall plates and data plates with multiple network connections.

FSR's Wall Box series offers 18 different models to fit a variety of applications. Recessed and surface mounts are available for new or existing construction as well as solid door or window versions. Rugged yet attractive, the WB series is an effective way to secure and protect wall plates and data plates where multiple control, data and AV access points are necessary.



WB-MS2G



WB-PS4G



WB-R2G



WB-MS1G

### DSKB

#### Wall Plate Mounts

Two new sizes for the DSKB, manufactured specifically for the Crestron TSW-570. There are two models that mount the touchscreen in two orientations, portrait and landscape. Ideal for applications where wall mounting isn't practical, the DSKB provides a secure, angled desktop or shelf-mounted solution with a sleek, ergonomic 45° tilt. The console's mounting flexibility makes it perfect for control systems, switch panels, and now advanced touch screens. This new version enhances usability while protecting equipment from damage or theft, offering integrators a modern, professional way to deploy powerful interfaces in any environment.



Masonry Box



### WB-CMU-6G

The WB-CMU-6G-B is a new six-gang wall box used in Masonry wall construction. The unit is designed for CMU construction with a large volume plate area for high-density configurations recessed to protect the connectors and multiple KO openings for 3/4" to 1-1/4" conduit. It can separate compartments for high and low voltage, and gang plates can be configured in many different electrical plate configuration combinations. The box comes complete with a divider and spacers; no extra parts are needed.

### WB-3G-4G

These AV wall boxes are available in two sizes; either a standard 3-gang plate or a standard 4-gang plate.

The appropriate blank plate is supplied with each wall box.

### SMWB Surface Mount Boxes

Designed for mounting standard gang devices and plates. These rugged utility boxes can be used to conveniently mount accessories from FSR and other manufacturer's controls, switch panels, keypads and IPS wall plates. Available in 1-gang thru 4-gang in black or white textured paint.



### WB-X Series

#### Large Capacity Wall Boxes with Safe, Secure Cable Management

There are three back box styles that are currently available in three different connector capacities for a total of nine possible configurations.

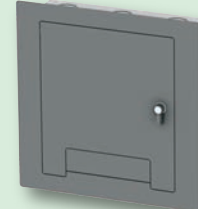
The internal connector mounting plate styles handle either standard gang plates, FSR's huge assortment of IPS inserts or "XLR" type connectors.

The WB-X IPS and XLR style have tapped holes on the connector mounting plates for easy connector mounting and are painted black.

All back boxes include installation brackets for mounting in old or new construction.



WB-X1



WB-X2



WB-X3-GNG Interior view



WB-X3 Closed view



### MWB-28 Multi-Trade Wall Box

The MWB-28 is a high-capacity, multi-purpose wall box designed to support electrical, low voltage, data, and AV connections all in one location. Engineered for seamless coordination between trades, it's ideal for hospitals, schools, commercial offices, and mixed-use developments. With a spacious interior and customizable plate configurations, the MWB-28 offers ample room for conduits, devices, and connectors. Hospital-grade receptacles are available.



## OUTDOOR

### The Only Outdoor Wall Boxes Designed for AV & IT Connections.

These popular outdoor wall boxes are installed worldwide. Locking doors in white are standard with other color and style options available upon request including windows.

The OWB-X-GNG "gang" style back box includes factory mounted moveable high voltage dividers so that compartments containing AC line power can be isolated from low voltage and signal areas. Multiple gang arrangements are accomplished with a combination of supplied moveable dividers and spacer/filler panels.

The OWB-X3-IPS and -XLR style back boxes have tapped holes on the connector mounting plates for easy connector mounting and are painted black.

The OWB-X3-PLT style has a blank mounting plate to be punched or drilled by the user per their requirements. The depth of the plate is field adjustable.



OWB-GNG shown



OWB-X3-IPS bracket (three provided)



OWB-X3-XLR bracket (four provided)



OWB-X3-PLT bracket (one provided)



OWB-500P



OWB-CP1



OWB-CP1-W



P: 800.332.FSR1 • W: fsrinc.com • E: sales@fsrinc.com



FSR wall box products meet the Build America Buy America Act (BABAA) and TAA requirements



P: 800.332.FSR1 • W: fsrinc.com • E: sales@fsrinc.com



FSR wall box products meet the Build America Buy America Act (BABAA) and TAA requirements