

# DV-WPHXT

## DIGITAL/ANALOG AUTO SWITCHING CAT-x TRANSMITTER 2-GANG DECORA WALLPLATE



DV-WPHXT-1CTx-WHT  
Wallplate Transmitter

# FSR

Video Products Group

DV-WPHXT



DV-HXT-1Rx CAT-x Receiver

### Connect with Confidence

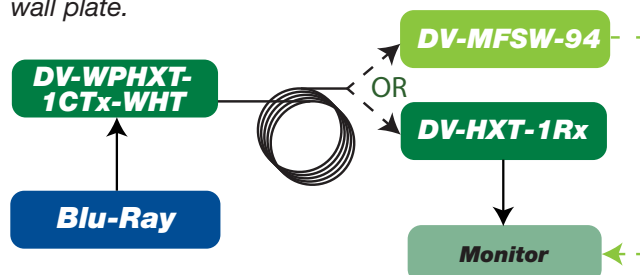
The DV-WPHXT-1CTx-WHT Wallplate Transmitter allows one VGA and one HDMI/DVI-D high quality digital media input to be connected at a distance of up to 150 ft.\* (see note on back) from a receiver using a single, unshielded Cat6 network cable. The unit switches automatically to a live video source, operates manually via a push button on the wall plate face or via RS-232 control.

The attractive white wall plate front panel connections include an HD-15 connector, an HDMI connector and a 3.5mm stereo mini plug. The rear surface hosts an RJ45 output connector and a captive-screw connector for power and RS-232 communication.

The DV-WPHXT-1CTx-WHT is compatible with FSR's DV-HXT-1Rx CAT-x Receiver and is available as a kit. The transmitter units can be ordered separately when using them in conjunction with FSR's DV-MFSW-94 Presentation Matrix Router. (See back page).

This new product is specifically designed for systems integration and fits comfortably in a standard 2-gang electrical box, or can be mounted directly in furniture or through any other surface.

The DV-WPHXT-1CTx-WHT is packed with features and combines auto-switching, user control, RS-232 control and superb AV signal transmission in a compact 2-gang wall plate.



Images not to scale.  
Specifications are subject  
to change without notice.

### FEATURES

- Automatically or manually switches to the live video source
- Allows front panel switching or remote switching via RS-232 control
- Accepts both analog VGA sources and digital HDMI / DVI-D sources
- HDCP compliant
- Convenient wall plate or panel mounting design
- Designed to fit in a 2-gang electrical box
- Power supply and 6' HDMI to DVI-D cable included

### APPLICATIONS

- Video Wall System
- Large LED Sign Board
- Medical Imaging Equipment
- TV Broadcast Station
- Auditorium
- Conference Room
- Church Video System

### ORDERING INFORMATION

#### DV-WPHXT-1CTx-WHT

Transmitter only

(HD-15 and DVI-D input to RJ45 CAT output to DV-HXT-1Rx Catx Receiver or DV-MFSW-94 Switcher)

#### DV-WPHXT-1C-WHT

Transmitter and Receiver Set

(HD-15 and HDMI input to HDMI output)

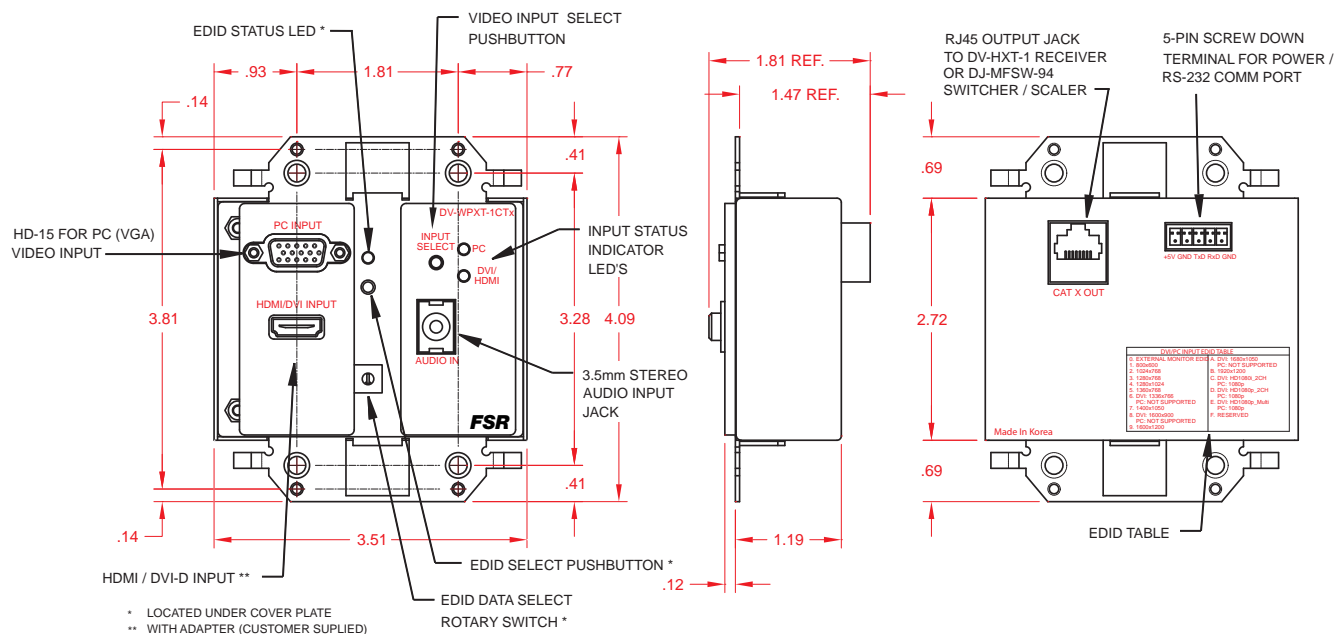
### FSR Inc.

244 Bergen Boulevard, Woodland Park, NJ 07424  
Phone: 973.785.4347 · Fax: 973.785.4207  
Order Desk: 1-800-332-FSR1  
Web: [www.fsrinc.com](http://www.fsrinc.com) · E-mail: [sales@fsrinc.com](mailto:sales@fsrinc.com) LIT1424B

## SPECIFICATIONS

<b>Input Signal</b>	VGA, HDMI (DVI-D with adapter), Stereo Audio
<b>Output Signal</b>	TMDS
<b>Connectors</b>	
DC Power input	2 pin pluggable screw (part of 5 pin connector)
PC (VGA) input	HD-15
HDMI DVI-D input	HDMI female
RS-232C port	3 pin pluggable screw (part of 5 pin connector)
Stereo audio input jack	3.5mm female
CAT-x output	RJ45 (TIA/EIA 568B)
<b>Data Transmission Speed</b>	2.25 Gbps (Single Link)
<b>Digital Video Bandwidth</b>	25~225 MHz
<b>Resolution</b>	Up to WUXGA (1920x1200) @ 60Hz, 1080p Limitations are dependent on the display being used.
<b>DVI-D Version</b>	1.1 Compliance with Stereo Audio
<b>HDCP / EDID Support</b>	Compliant / EPROM
<b>Input/Output Signal</b>	VGA, HDMI (DVI-D with Adapter), Stereo Audio
<b>Maximum Length</b>	1920x1200@60Hz,1080p with CAT6e UTP 550MHz: 164 ft. (50m)
<b>Power Consumption</b>	5W Max
<b>Power Supply*</b>	DC 5V 2A
<b>Dimension</b>	4.09" H x 3.51" W x 1.81" D (103.9 H x 90.5 W x 31 D mm)
<b>Weight</b>	0.9 lbs. (0.4Kg)

\* NOTE: The length of cable between the wall plate and the power supply can be extended up to 50' by using 16 AWG wire. Longer distances, from a minimum of 51' to maximum of 150' can be achieved using the 17420 power supply in conjunction with the 16 AWG wire. The installer is cautioned to ensure correct polarity before applying power to the wall plate. Incorrect polarity will damage the unit and void the warranty.



**FSR's DV-MFSW-94 hybrid matrix switcher** allows both analog and digital video sources to be reliably routed to as many as four digital displays. The compact, 3RU unit accepts up to 9 sources and 4 HDMI outputs and is directly compatible with our DV-WPHXT-1CTx-WHT Transmitter. See LIT1384 available in FSR's document library or contact sales for more info.

**FSR Inc.**

244 Bergen Boulevard, Woodland Park, NJ 07424  
Phone: 973.785.4347 · Fax: 973.785.4207 · Order Desk: 1-800-332-FSR1  
Web: [www.fsrinc.com](http://www.fsrinc.com) · E-mail: [sales@fsrinc.com](mailto:sales@fsrinc.com)



*Sold Separately*