

PWB-HVBX

HuddleVU Wall Box



FSR

Metal Products Group

PWB-HVBX

DESCRIPTION

The HuddleVU Wall Box allows users easy access to AV cables and AC power, and is easy to use with rolling carts and wall mounted displays for impromptu huddle or collaboration sessions in multi-purpose learning environments.

These economical, large opening wall boxes are designed to fit in 16" on center stud bays. Stud spacers are included for mounting the box to the open-end side of the metal stud if required. The PWB-HVBX can easily be mounted with one or two FSR LP-TBRT cable retractors (purchased separately), as well as an optional surge suppressed AC power outlet (four outlets), and mounting shelves for HDBaseT, digital media transmission and switching devices.

FSR's Low Profile Cable Retractors (LP-TBRT) make tangle-free cable management easy. Cables can be quickly deployed and extend up to 6' from the box. A simple pull and release of the extended cable returns the cable to the protective reel. No button release required.

The LP-TBRT assemblies can be ordered in HDMI (4 color coded cables available Black, Blue, Red, Yellow), HD-15 (VGA) with fixed 1/8" stereo audio jack, CAT-6, 1/8" Stereo Audio, DisplayPort to HDMI, Mini Display Port to HDMI, DisplayPort to DisplayPort, and USB. The high quality cables have been tested for durability. Retractor life is greater than 8,000 cycles.

Two optional adjustable shelves can be ordered for convenient equipment mounting and include a hole pattern for screw spacings from 3/8" to 1 1/4" including multiple VESA 100 hole locations. An additional option includes up to two brackets (one provided) to install FSR T6-HLB connector inserts for additional connections.

All user connections are located in the open user access area at the bottom of the unit (including retractor pulls and connector brackets when used). There is a duplex opening in the user access area to mount AC or low voltage connectors. A blank plate is provided.

The wall box covers are available in black or white and provide a neat appearance when installed, hiding unsightly cabling.

FEATURES

- Easily mounts to wood or steel studs, 16" centers
- Order in white or black
- Cable-tie mounts
- Two Triple Play Mounting Solution openings per box
- Optional (2) adjustable component shelves with position lock (*See note on p.3)
- Optional LP-TBRT Cable retractors (two max)
- Optional T6-HLB Connector Brackets (two max)
- Optional AC power bracket with (4) 15-amp surge protected receptacles (*See note on p.3)

APPLICATIONS

- Collaboration Areas
- Digital Signage
- Hospitals
- Conference Centers
- Schools
- Airports
- Command Centers
- Electronic Billboards
- Museums
- Arenas

FSR Inc.

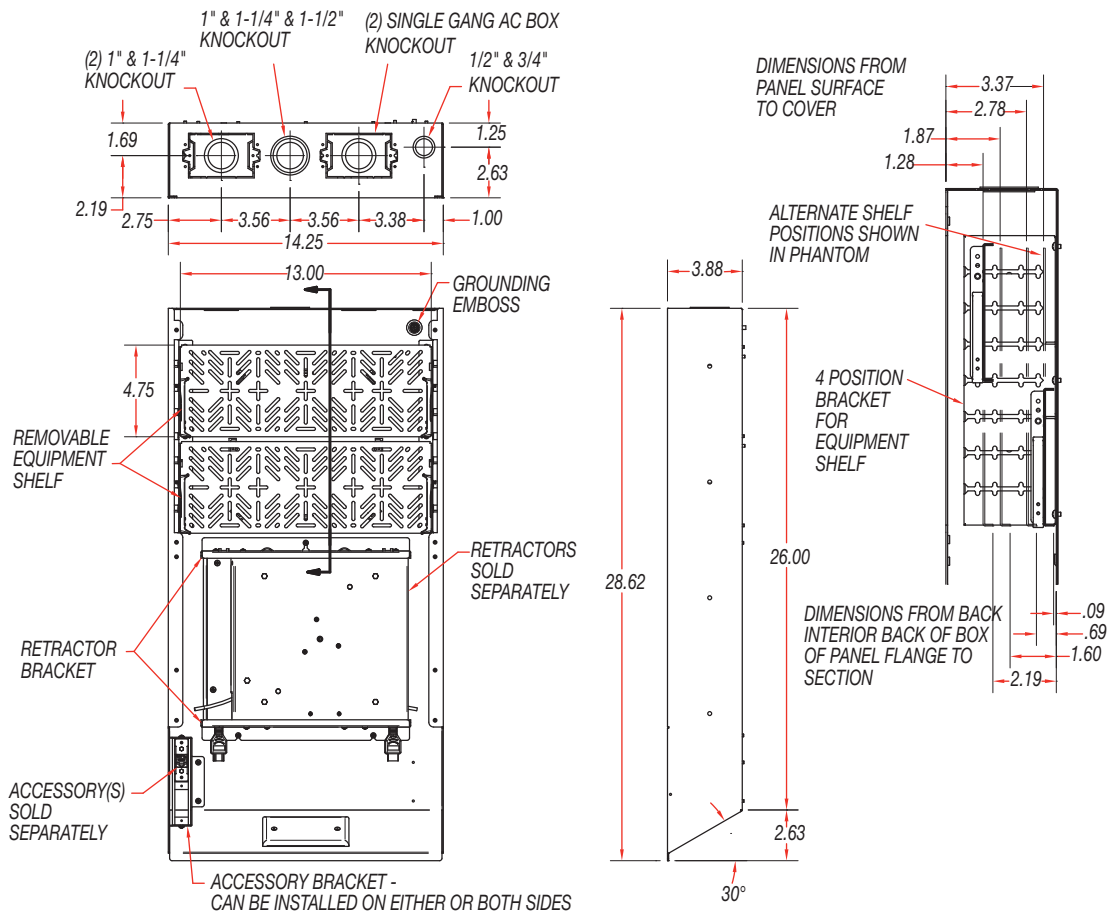
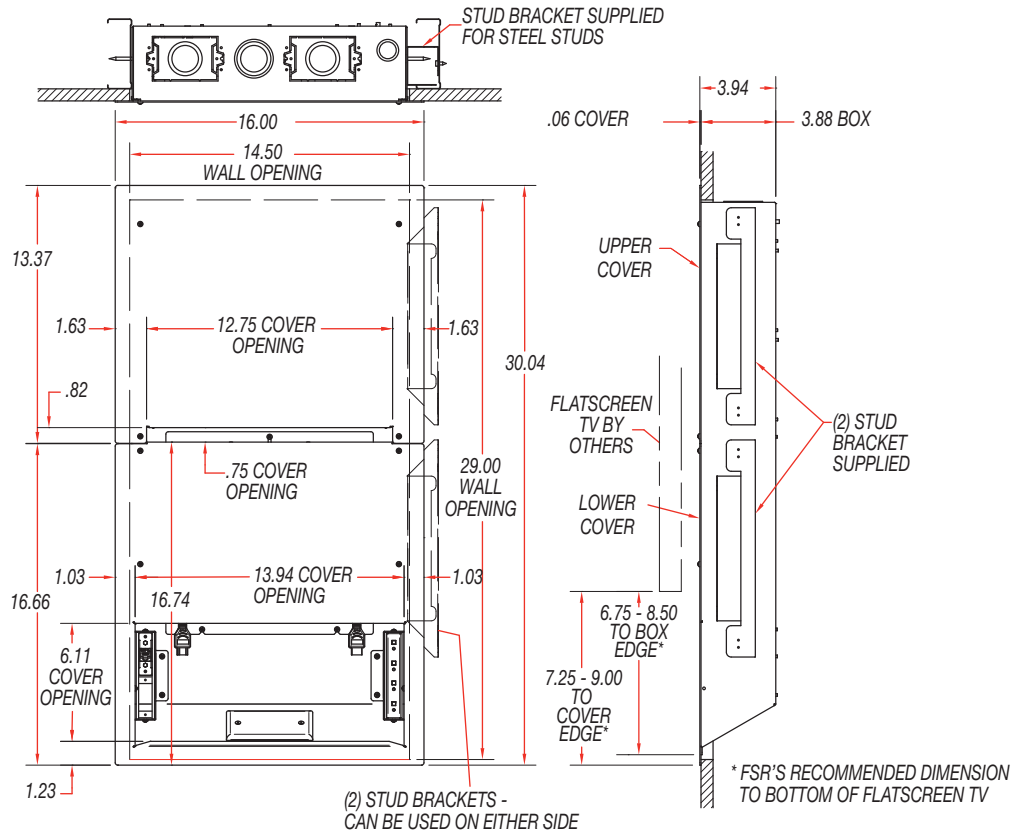
244 Bergen Boulevard, Woodland Park, NJ 07424

Phone: 973.785.4347 · Fax: 973.785.4207

Order Desk: 1-800-332-FSR1

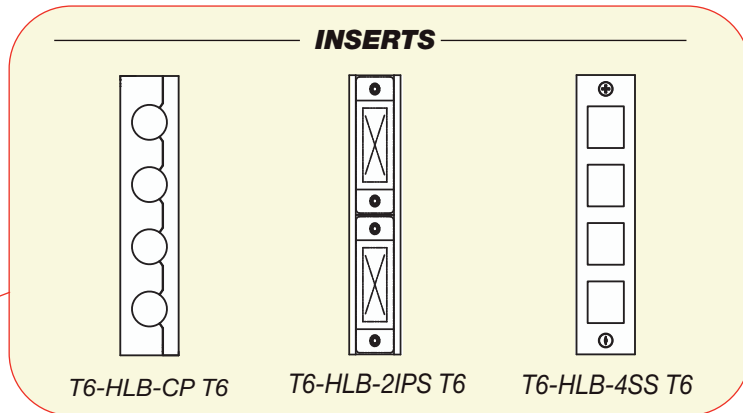
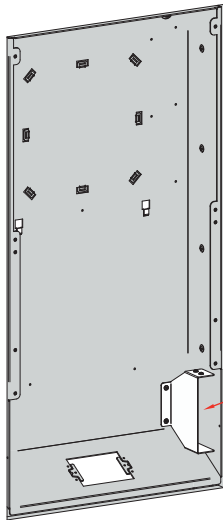
Web: fsrinc.com · E-mail: sales@fsrinc.com LIT1681A

DIMENSIONS



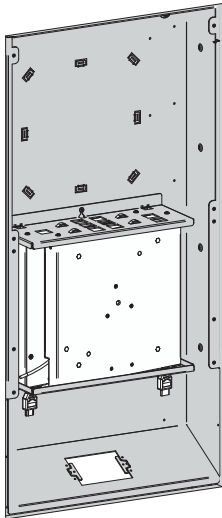
PWB-HVBX COMPONENTS

See ordering table for more information.



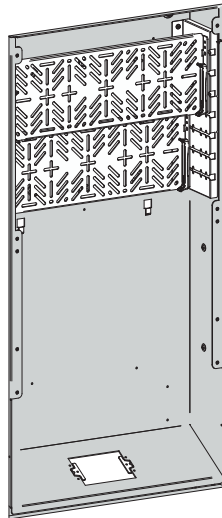
PWB-HVBX-HLB-BRK Mounting Bracket

(One provided-maximum
two per box. T6-HLB-xxx
Inserts and additional
bracket ordered
separately.)



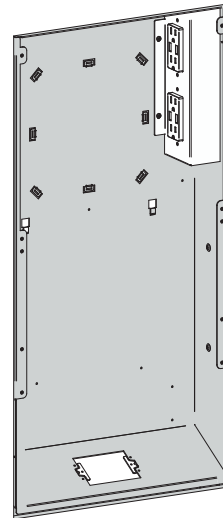
LP-TBRT Retractors

(Ordered separately.)



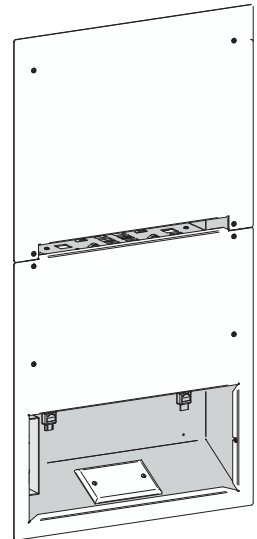
PWB-320-SMK Two Shelf Kit*

(Ordered separately.)



PWB-320-AC2 Two Duplex SPIKESHIELD AC outlets with mounting bracket*

(Ordered separately.)



PWB-HVBX upper / lower covers and duplex cover plate

(Provided. Available
in black or white.)

*The PWB-SMK and the PWB-320-AC2
can not be used together.

ORDERING TABLE

PWB-HVBX Wall Box

Item #	Description
18022	PWB-HVBX-BLK RETRACTOR Wall Box
18023	PWB-HVBX-WHT RETRACTOR Wall Box

T6-HLB Bracket options (each requires accessory mounting bracket (One provided - maximum two per box))

17339	T6-HLB-CP T6 1/2 INSERT
17340	T6-HLB-2IPS T6 1/2 INSERT
17444	T6-HLB-4SS T6 1/2 INSERT
18062	PWB-HVBX-HLB-BRK Accessory mounting Bracket for above inserts (One provided - maximum two per box)

Accessories

18009	PWB-320-AC2 Two Duplex SPIKESHIELD AC outlets with mounting bracket
18055	PWB-320-SMK 4" SHELF KIT - 2 SHELVES and SIDE BRACKETS

NOTE: The PWB-SMK and the PWB-320-AC2 cannot be used together.

LP-TBRT Cable Retractors (Maximum two per box)

18030	LP-TBRT-HDMI-BK 6' Payout Black HDMI Retractor
18031	LP-TBRT-HDMI-BL 6' Payout Blue HDMI Retractor
18032	LP-TBRT-HDMI-RD 6' Payout Red HDMI Retractor
18033	LP-TBRT-HDMI-YL 6' Payout Yellow HDMI Retractor
18034	LP-TBRT-HD15-BK 6' Payout Black VGA w/Audio Retractor
18035	LP-TBRT-AUD-BK 6' Payout Black 3.5mm Retractor
18036	LP-TBRT-CAT6-BK 6' Payout Black Cat-6 Retractor
18037	LP-TBRT-DSPT-BK 6' Payout Blk DisplayPort to HDMI Retractor
18038	LP-TBRT-MiniDS-BK 6' Payout Blk MiniDS to HDMI Retractor
18039	LP-TBRT-USB-BK 6' Payout BLK USB-A to A Retractor
18040	LP-TBRT-DSP-DSP-BK 6' Payout DisplayPort to DP Retractor



Visit the FSR website for more detailed information.



Specifications are subject to change without notice.

FSR

244 Bergen Boulevard, Woodland Park, NJ 07424
 Phone: 973.785.4347 · Fax: 973.785.4207
 Web: www.fsrinc.com · E-mail: sales@fsrinc.com