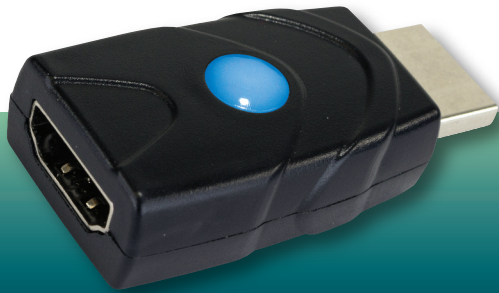


DR-EDID

Emulator



FSR

Video Products Group

DR-EDID

DESCRIPTION

The DR-EDID Emulator is designed to manipulate the EDID information provided to a connected HDMI source or any device connected prior to the unit in the HDMI chain.

The DR-EDID is a unique self-powered bidirectional device that can be inserted onto either end of any HDMI cable.

EDID refers to a block of information that is passed from the far end of your signal chain, normally the display, to the first device or source. This EDID contains critical information about the capabilities of the connected display, including audio and video format support, HDMI feature support, etc.

This device allows the installer to simply and quickly modify the information with a rotary switch to select between 16 pre-installed settings or test the EDID from any device.

This will simplify troubleshooting the technical complications that often arise when performing video system integration or when left in place, permanently alter the EDID of the system.

SPECIFICATIONS

- HDMI Type A Male
- HDMI Type A Female
- LED Indicator
 - a. Flashing Red - learning mode
 - b. Purple - learning mode
 - c. Blue - emulation mode, ready to use
- Rotary Switch for selecting EDID settings



DR-EDID™ EMULATOR



FEATURES

- 16 preinstalled EDID
- Passive inline device – No external power needed
- Bi-directional (bi-gender). It can be used in either direction
- HDCP 1.4 / 2.2 Compatible
- Hot pluggable
- Supports HDMI 1.3/1.4/2.0
- Supports up to 4K/UHD @ 60Hz
- Learn and test the EDID from any Display

FSR Inc.

244 Bergen Boulevard, Woodland Park, NJ 07424

Phone: 973.785.4347 · Fax: 973.785.4207

Order Desk: 1-800-332-FSR1

Web: www.fsrinc.com · E-mail: sales@fsrinc.com

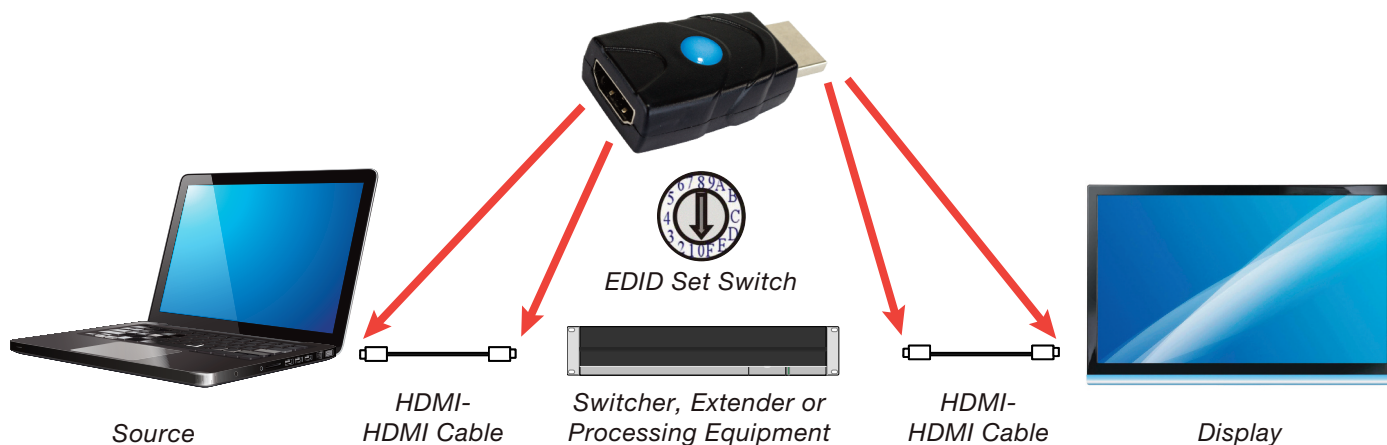
LIT1704B

PRE-INSTALLED EDID

1. Turn the rotary switch to 1 to F to select the preinstalled EDID.
2. It is recommended to power cycle all equipment before the emulator is used to ensure HDMI hand shake initialization.

		Block 0 (for Computer)	Block 1 (for Player)
(0)	External EDID	_____	_____
(1)	480p	720x480@60Hz *2CH*	480p@60Hz *2CH*
(2)	720p	1280x720@60Hz *2CH*	720p@50Hz *2CH*
(3)	1080i	1920x540@60Hz *2CH*	1080i@60Hz *2CH*
(4)	1280x768_60	1280x768@60Hz *2CH*	720p@60Hz *2CH*
(5)	1280x1024_60	1280x1024@60Hz *2CH*	720p@60Hz *2CH*
(6)	1366x768_60	1366x768@60Hz *2CH*	720p@60Hz *2CH*
(7)	1400x1050_60	1400x1050@60Hz *2CH*	720p@60Hz *2CH*
(8)	1680x1050_60	1680x1050@60Hz *2CH*	720p@60Hz *2CH*
(9)	1600x1200_60	1600x1200@60Hz *2CH*	720p@60Hz *2CH*
(A)	1920x1080_24	1920x1080@24Hz *2CH*	1080p@24Hz / 720p@60Hz *2CH*
(B)	1920x1080_60	1920x1080@60Hz *2CH*	1080p@60Hz *2CH*
(C)	1920x1200_60	1920x1200@60Hz *2CH*	1080p@60Hz *2CH*
(D)	3840x2160_30	3480x2160@30Hz *2CH*	3840x2160@24Hz / 1080p@60Hz *2CH*
(E)	3840x2160_60	3480x2160@60Hz *2CH*	3480x2160@60Hz *2CH*
(F)	4096x2160_60	3480x2160@60Hz *2CH*	4096x2160@60Hz *2CH* Block#2

Insert Anywhere in the System to Adjust EDID



FSR Inc.

244 Bergen Boulevard Woodland Park, NJ 07424
 Phone: 973.785.4347 · Fax: 973.785.4207
 Order Desk: 1-800-332-FSR1
 Web: www.fsrinc.com · E-mail: sales@fsrinc.com



Specifications are subject to change without notice.