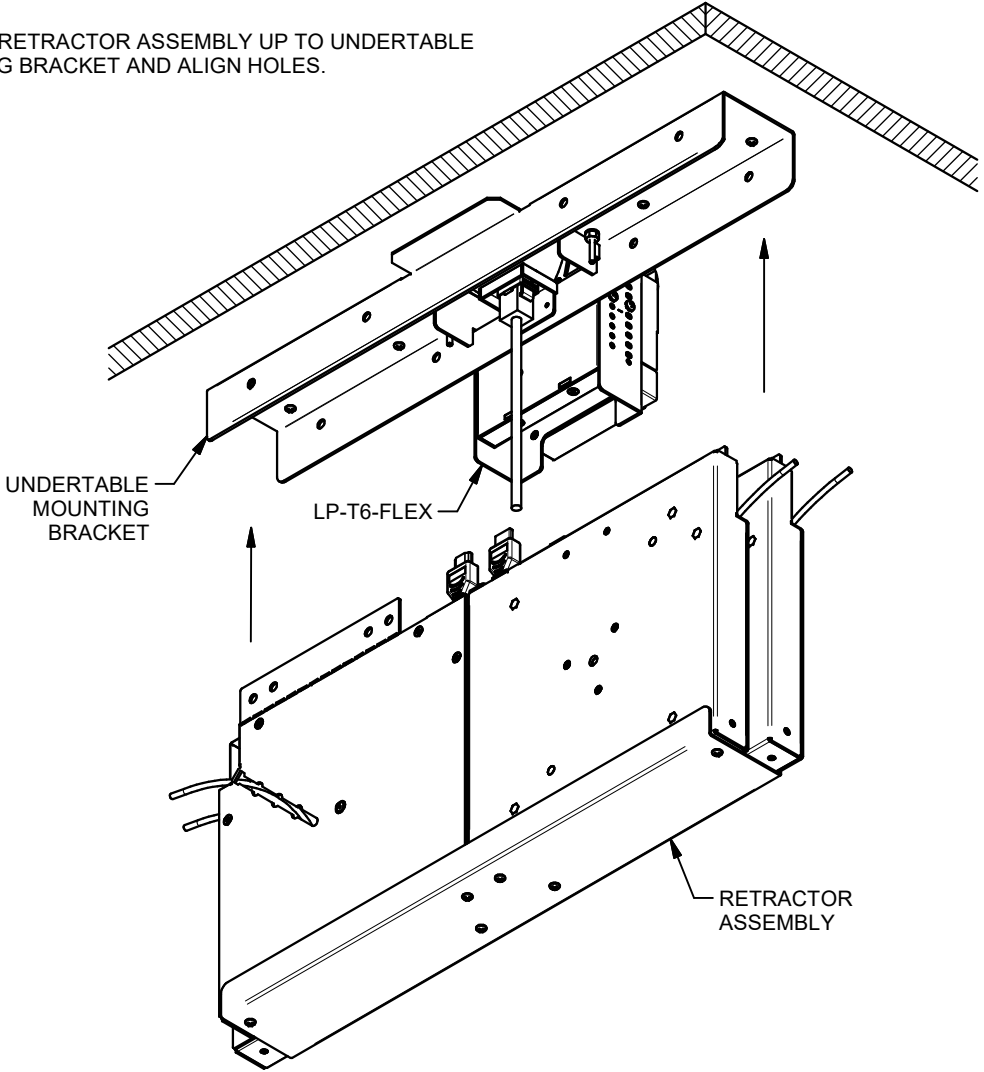
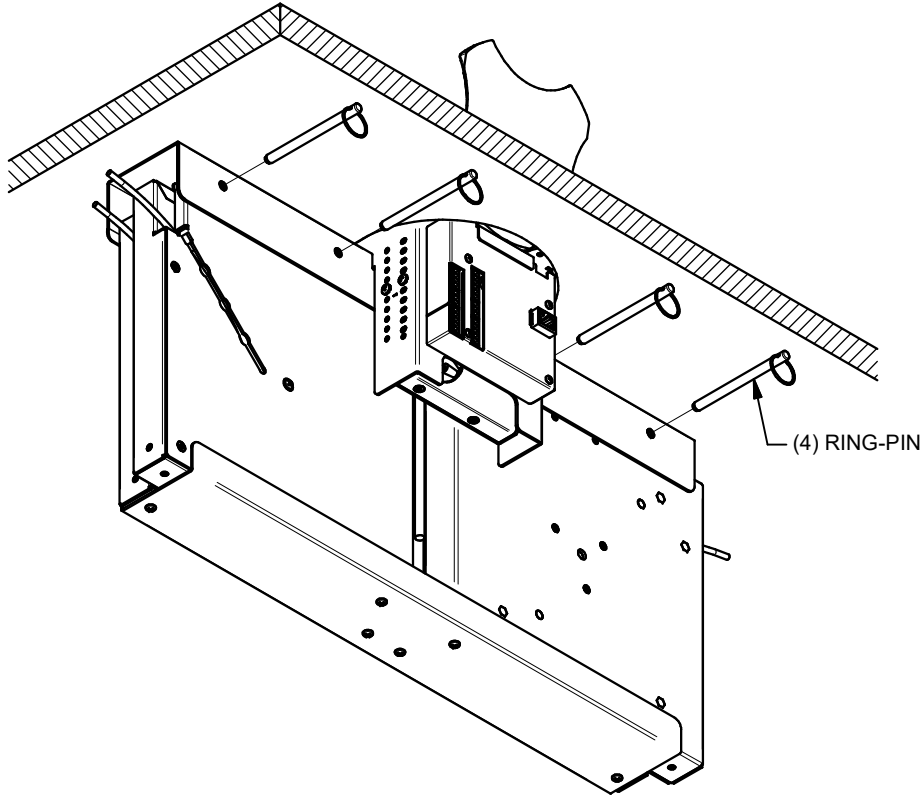


6b. PUSH UP RETRACTOR ASSEMBLY UP TO UNDERTABLE MOUNTING BRACKET AND ALIGN HOLES.



6c. INSERT RING-PIN INTO HOLES TO SECURE RETRACTOR ASSEMBLY IN PLACE (CAN BE INSTALLED FROM THE FRONT IF DESIRED) AND MAKE ELECTRICAL CONNECTIONS AS REQUIRED.

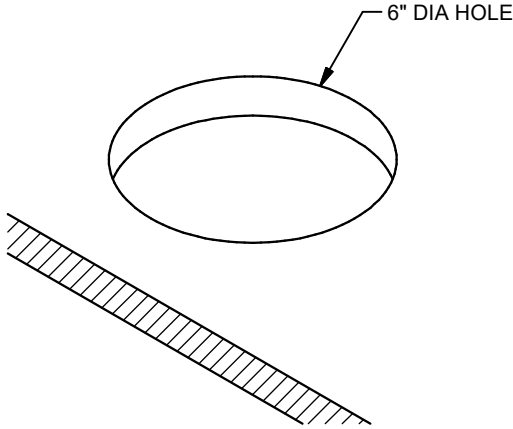


**FSR**

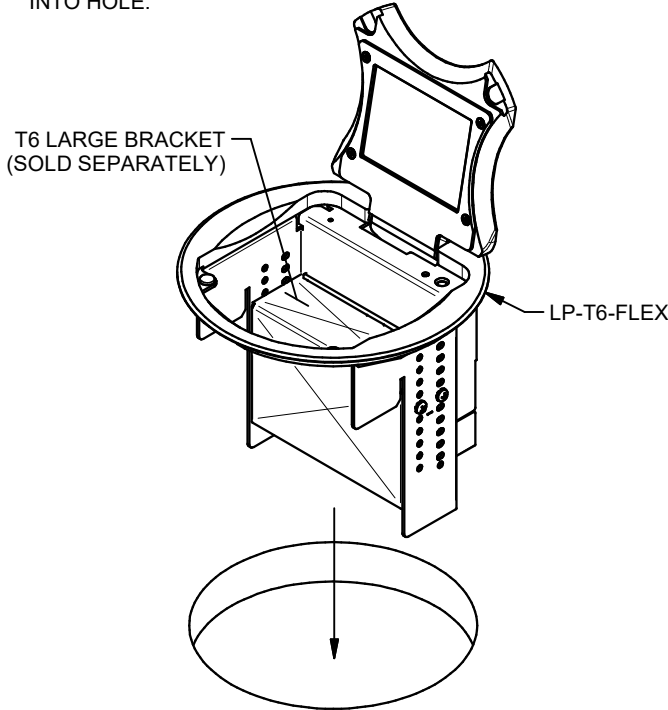
**LP-T6-FLEX Table Box Installation Instructions**

244 Bergen Boulevard, Woodland Park, NJ 07424, Phone: 973.785.4347 - Fax: 973.785.4207

1. DETERMINE LP-T6-FLEX LOCATION AND DRILL 6" HOLE.



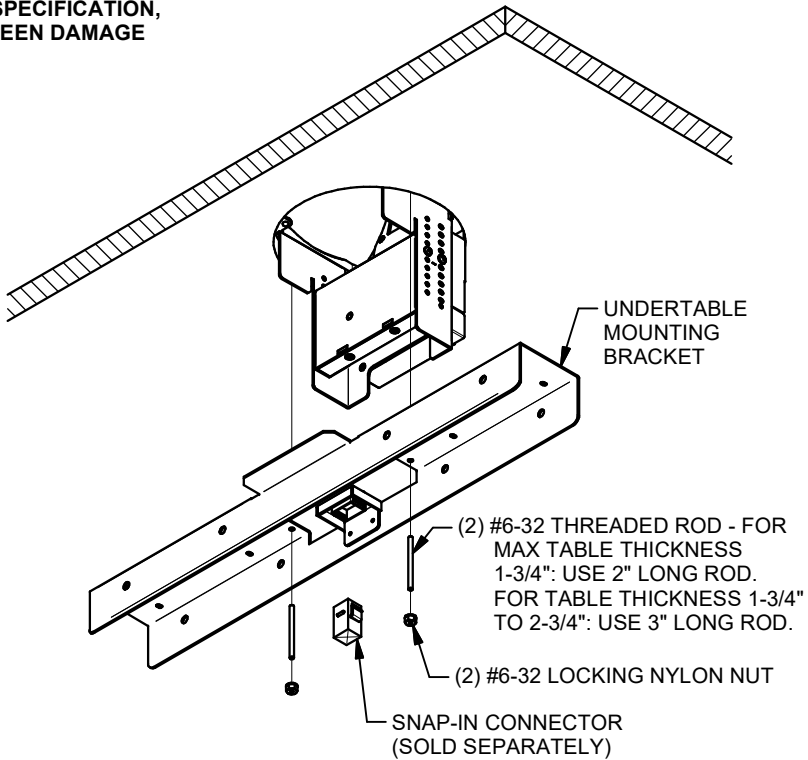
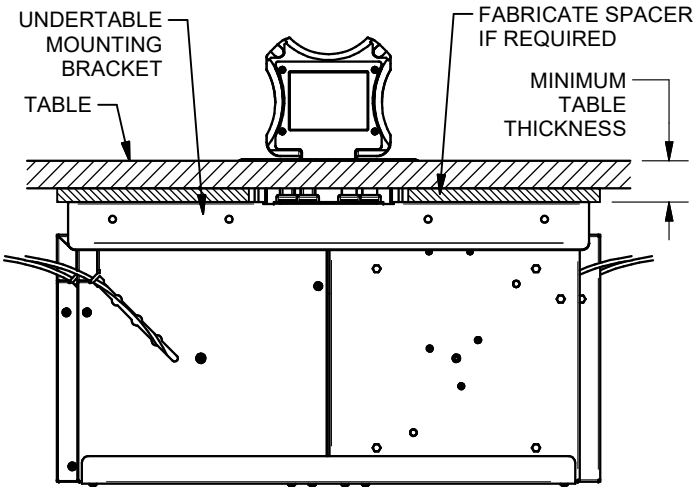
2. INSTALL T6 LARGE BRACKET (SOLD SEPARATELY) INTO LP-T6-FLEX (REFER TO T6 BRACKET INSTALLATION INSTRUCTIONS) BEFORE INSERTING LP-T6-FLEX ASSEMBLY INTO HOLE.



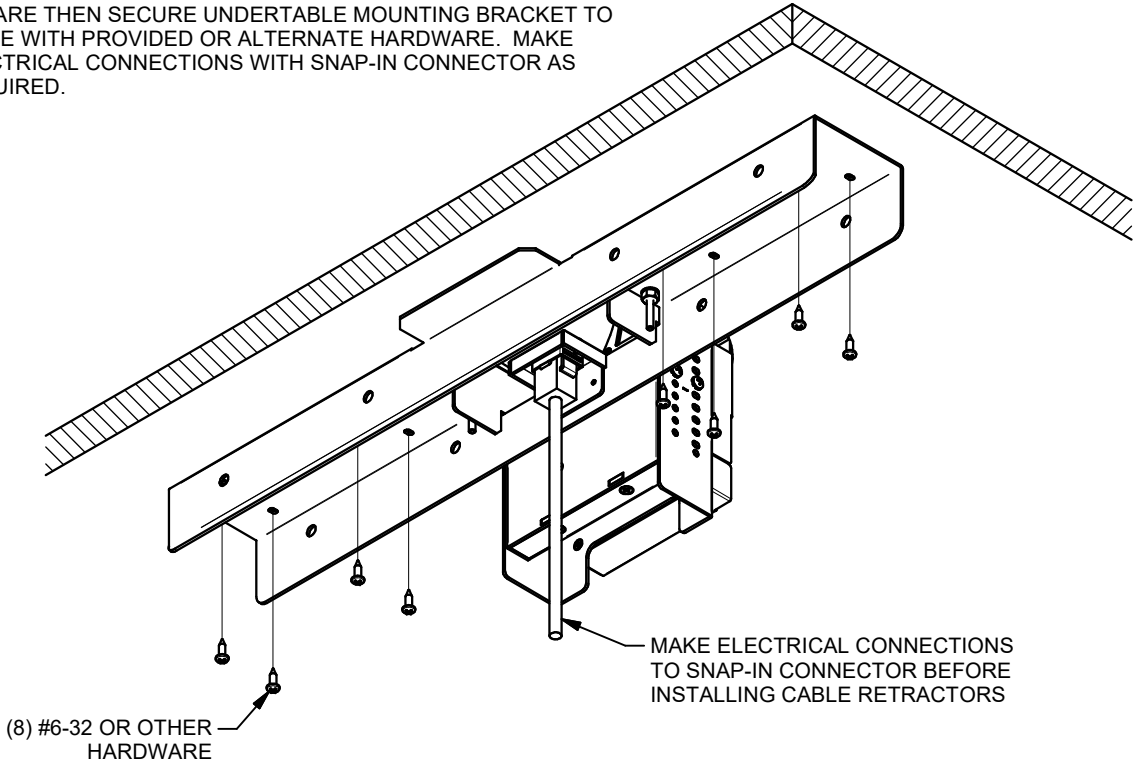
3. INSTALL BLANK OR SNAP-IN CONNECTOR (SOLD SEPARATELY) INTO UNDERTABLE MOUNTING BRACKET. INSTALL APPROPRIATE-LENGTH #6-32 THREADED RODS INTO LP-T6-FLEX. SECURE UNDERTABLE MOUNTING BRACKET WITH #6-32 LOCKING NYLON NUTS.

**CAUTION: IF DESK/TABLE IS LESS THAN MINIMUM THICKNESS SPECIFICATION, SPACERS MUST BE FABRICATED AND USED, OR SCREEN DAMAGE MAY RESULT.**

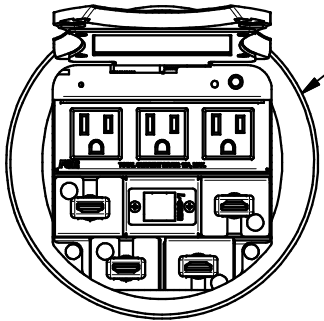
- \* MINIMUM THICKNESS FOR ALL LP RETRACTORS EXCEPT FOR DISPLAY PORT: 1-1/8"
- \* MINIMUM THICKNESS FOR DISPLAY PORT LP RETRACTOR: 1-1/2"



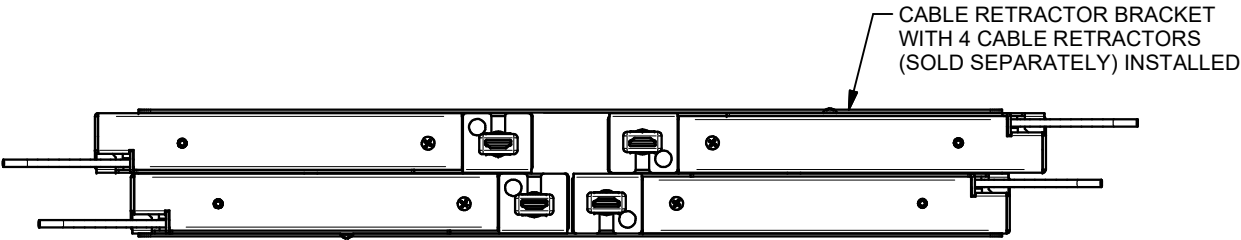
4. SQUARE THEN SECURE UNDERTABLE MOUNTING BRACKET TO TABLE WITH PROVIDED OR ALTERNATE HARDWARE. MAKE ELECTRICAL CONNECTIONS WITH SNAP-IN CONNECTOR AS REQUIRED.



5. INSTALL THE 4 CABLE RETRACTORS (SOLD SEPARATELY) ONTO CABLE RETRACTOR BRACKET (SEE CUSTOMER SPECS). REFERENCE PICTURES BELOW.

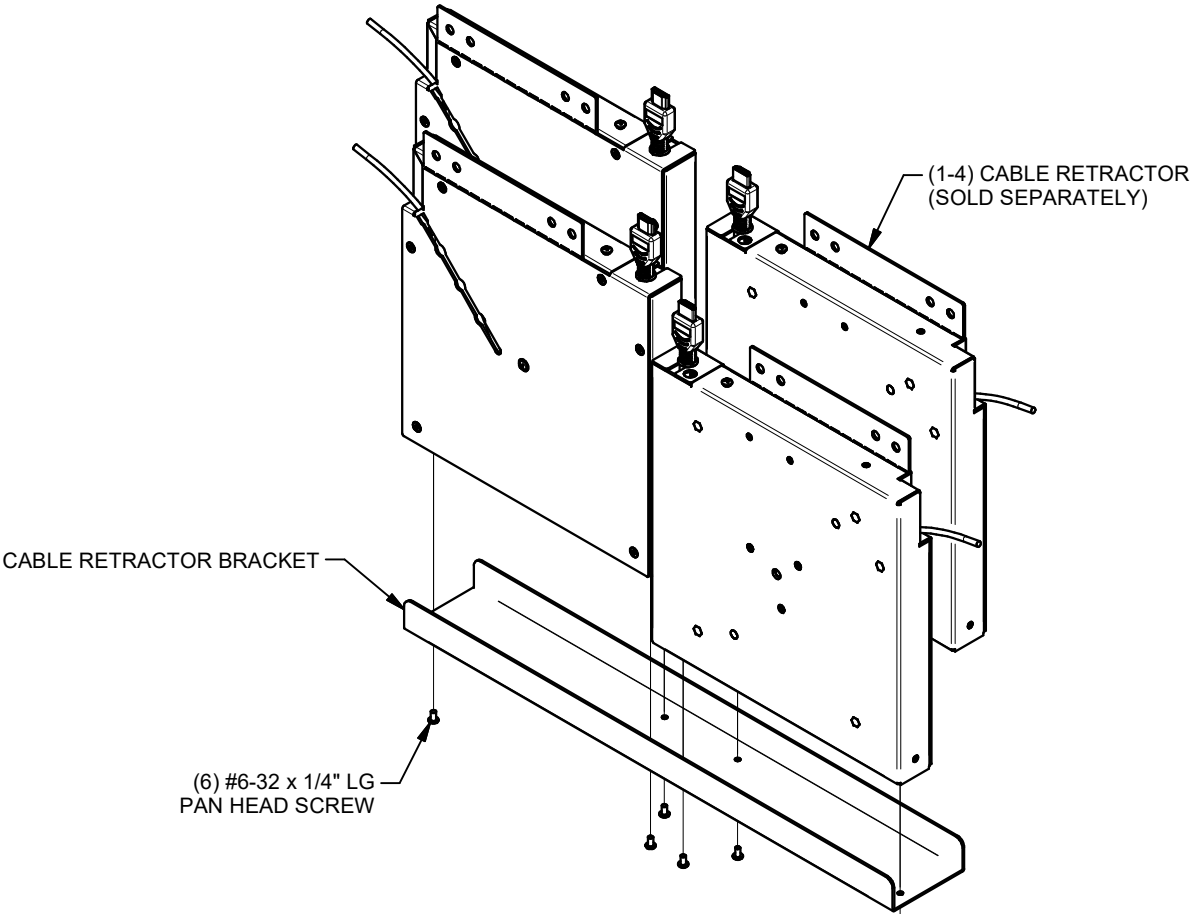


LP-T6-FLEX ASSEMBLY SHOWN WITH 4 CABLE RETRACTORS (SOLD SEPARATELY)



CABLE RETRACTOR BRACKET WITH 4 CABLE RETRACTORS (SOLD SEPARATELY) INSTALLED

5. (CONTINUED)



6a. LINE UP HOLES AS SHOWN.

