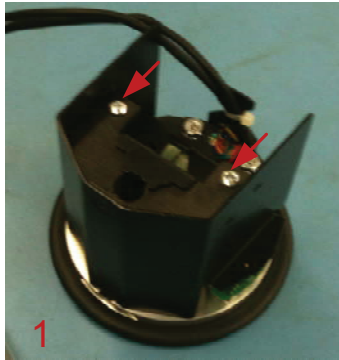


Mechanical Installation Instructions

To Install Video Cable:

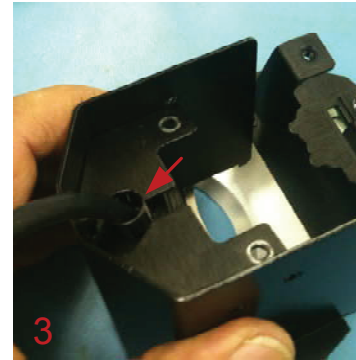
Remove the 2 Silver Screws



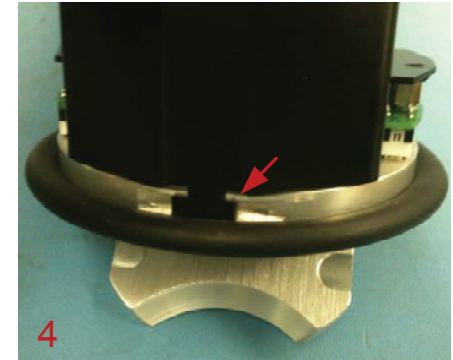
Remove the Front Cable Cover



Slip Grommet Over Cable with the Rounded Side Facing the Connector, then Snap Grommet into the Hole Provided

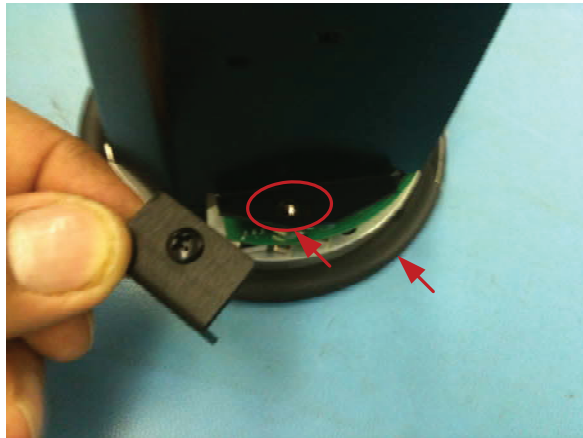


Replace Cable Cover by Slipping the Cable Cover Tab into the Milled Slot in the Top Cover. Replace 2 Screws from Step 1



To Install Table Box:

Remove Rubber Edge Protector from Top Cover
Install 2 Right Angle Brackets into the Open Hole Marked Using the Provided Black Screws



LED Brightness Jumper:

LEDs are Designed for 5 to 12 Volt Operation
Remove Jumper for 12 Volt or Dimmer Operation

