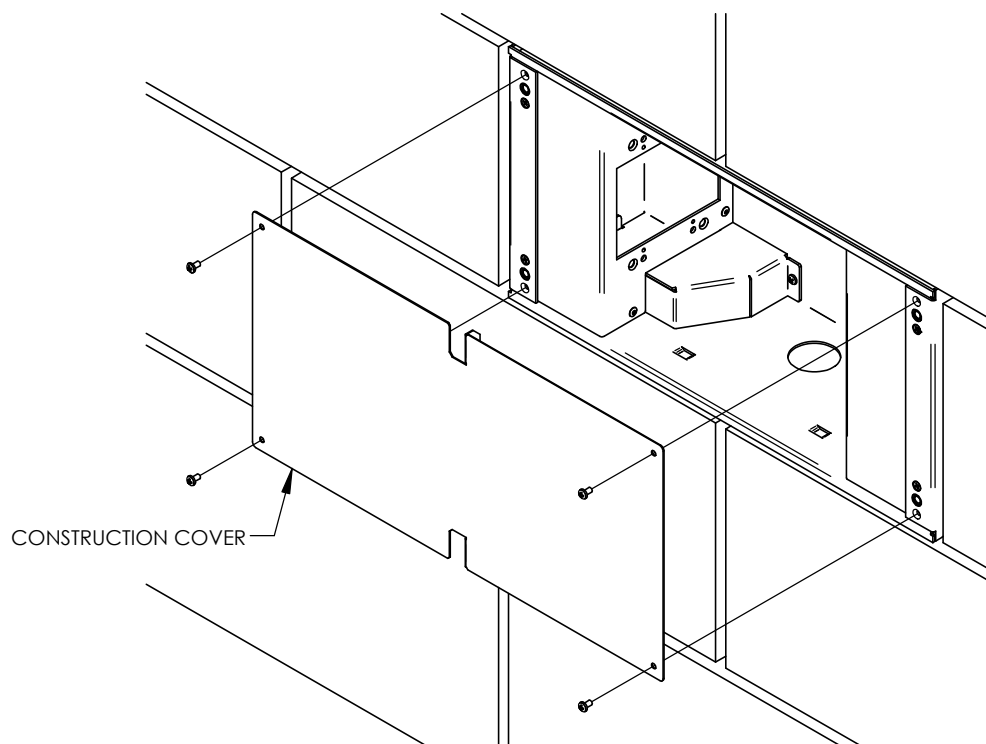
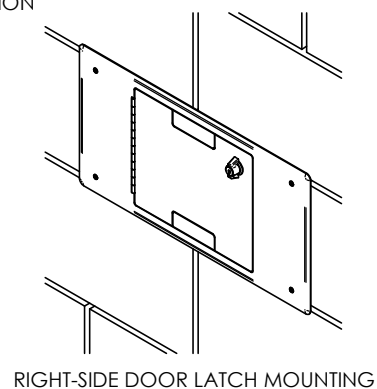
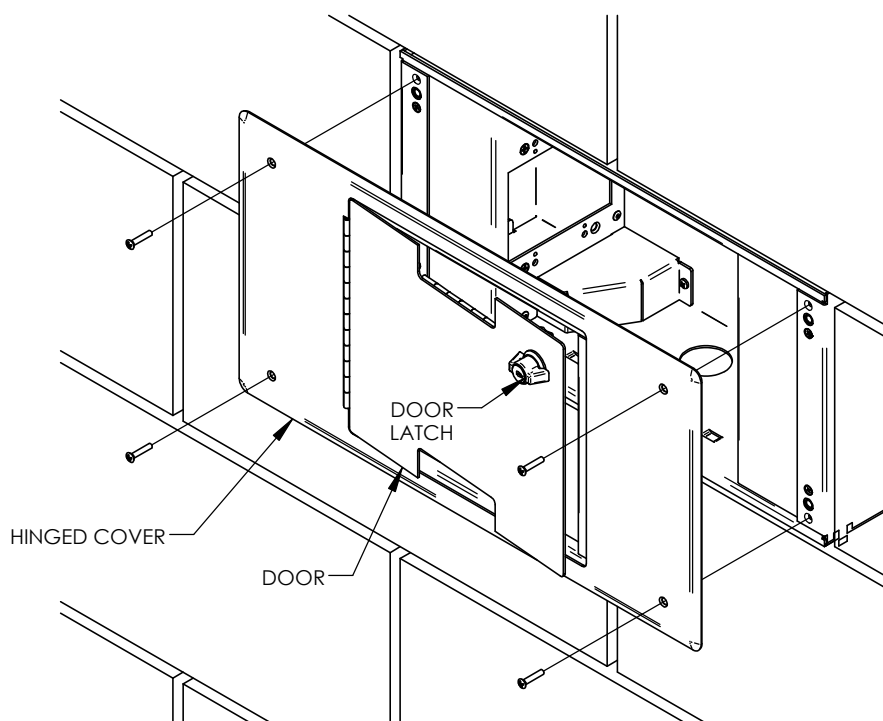


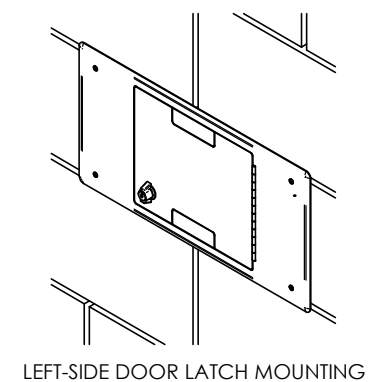
1. TO INSTALL THE FINISH COVER REMOVE AND DISCARD CONSTRUCTION COVER AND HARDWARE.



2. INSTALL HINGED COVER WITH HARDWARE PROVIDED. COVER CAN BE ROTATED 180° TO POSITION DOOR LATCH TO LEFT OR RIGHT SIDE OF DOOR.



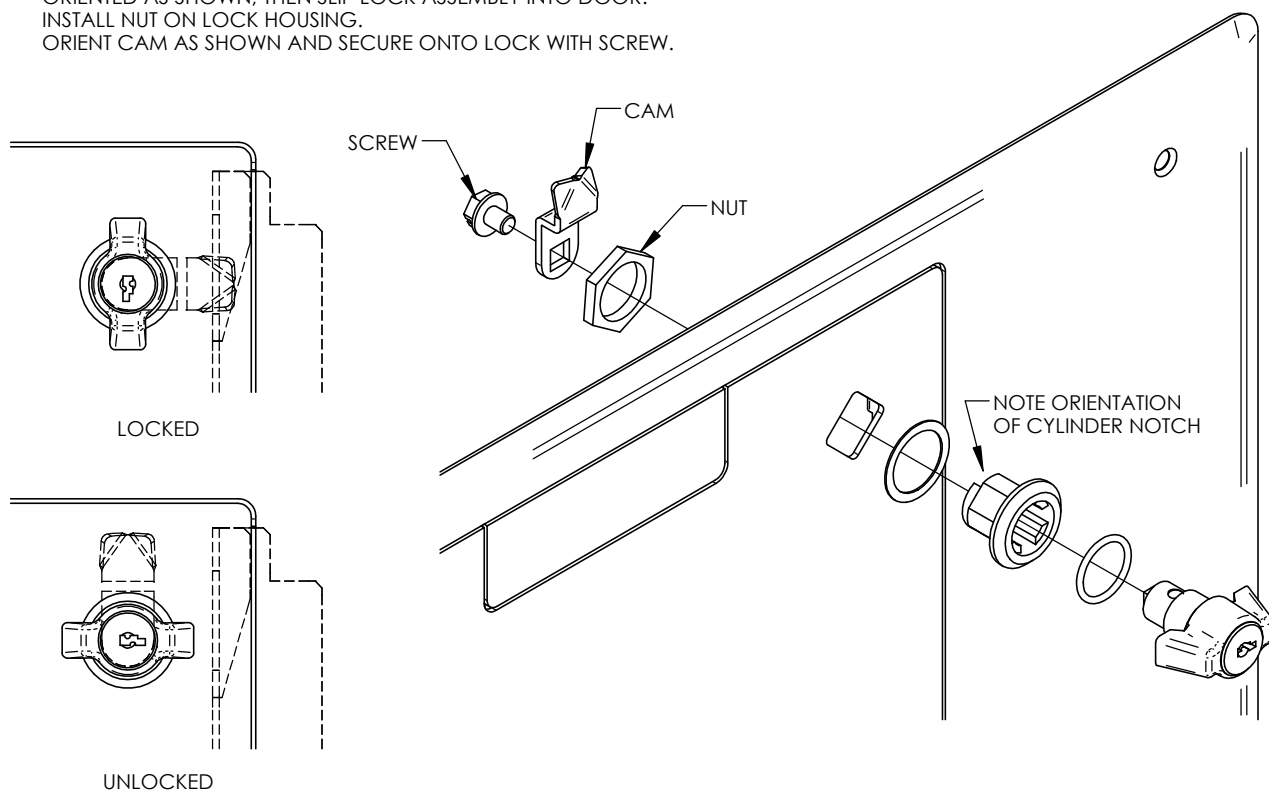
RIGHT-SIDE DOOR LATCH MOUNTING



LEFT-SIDE DOOR LATCH MOUNTING

HANDLE LOCK INSTALLATION:

1. REMOVE LOCK ASSEMBLY FROM BAG, THEN REMOVE SCREW, CAM AND NUT FROM LOCK.
2. MAKE SURE LOCK HOUSING (NOTE LOCK PIN LOCATION) AND HANDLE ARE ORIENTED AS SHOWN, THEN SLIP LOCK ASSEMBLY INTO DOOR.
3. INSTALL NUT ON LOCK HOUSING.
4. ORIENT CAM AS SHOWN AND SECURE ONTO LOCK WITH SCREW.



FLUSH LOCK INSTALLATION:

1. REMOVE LOCK ASSEMBLY FROM BAG, THEN REMOVE C-CLIP FROM LOCK AND REMOVE CAM.
2. INSERT KEY, ROTATE HOUSING TO LEFT-HAND LIMIT, ORIENT KEY PARALLEL TO TOP OR BOTTOM DOOR EDGE, THEN SLIP LOCK ASSEMBLY INTO DOOR HOLE.
3. INSTALL NUT ON LOCK HOUSING.
4. ORIENT CAM AS SHOWN AND SECURE ON LOCK WITH C-CLIP.

